

Gunpowder Creek TMDL Alternative

Ohio Stormwater Association Conference

Brooke Shireman

May 10, 2019



Sanitation District No.1 of Northern Kentucky (SD1)

- Regional Wastewater and Storm Water Utility for Northern Kentucky Region (Boone, Kenton and Campbell Counties)
- Wastewater
 - Over 286,000 customers
- Storm Water
 - Over 287,000 customers



SD1 Storm Water Service Area

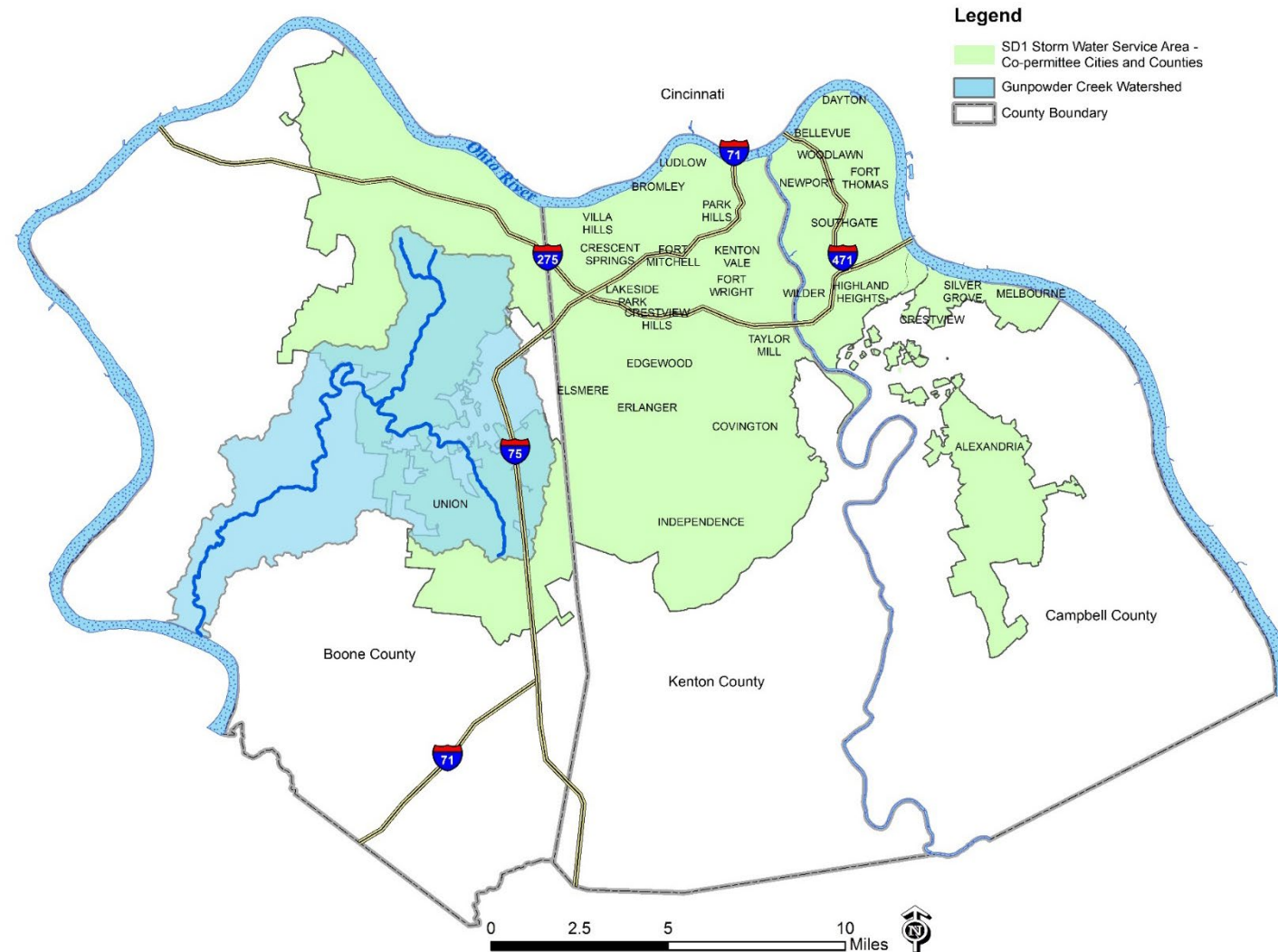
- Operates, Maintains and Improves Public MS4
 - ~ 430 miles of pipe
 - ~32,000 structures
- Oversees MS4 Phase II Permit Compliance
 - 29 co-permittee cities
 - Designated MS4 area of unincorporated counties




Gunpowder Creek Watershed

- Watershed
~ 58 square miles

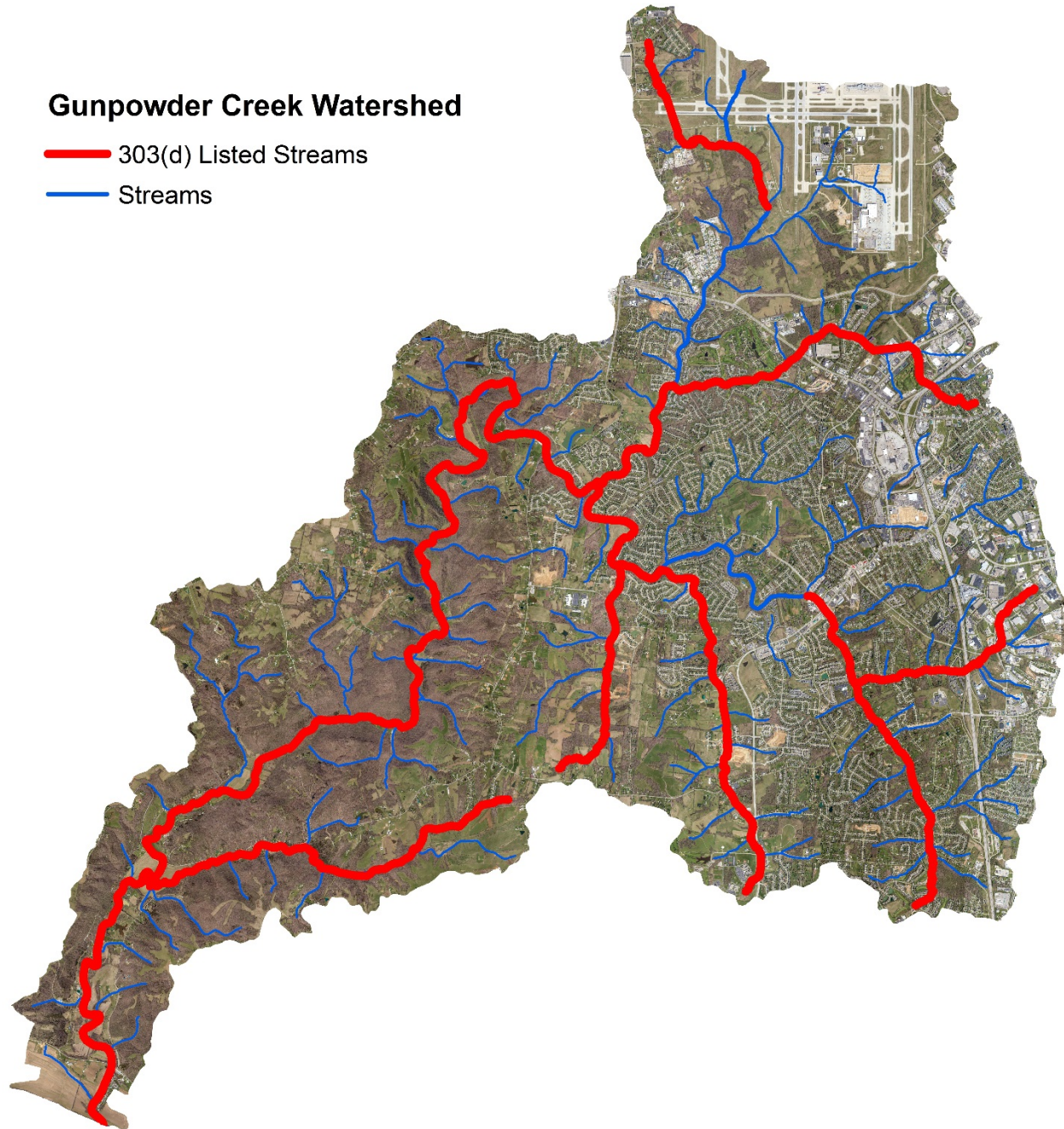
~ 36 square miles within
designated MS4 area
(SD1 and Florence)



Gunpowder Creek Watershed

 303(d) Listed Streams

 Streams



Gunpowder Creek Watershed Initiative



Gunpowder Creek Watershed Plan

Prepared for
Gunpowder Creek Watershed Initiative
December 2014





Proposed TMDL Development

- Total Maximum Daily Loads (TMDLs) are a requirement of the Clean Water Act.
- States must identify waters that are impaired and develop a TMDL for those impairments.
- A TMDL Report is a water quality restoration plan that describes how pollutant loads can be reduced to meet water quality standards.

Is there a different option?

TMDL Alternative (5-Alt Plan)

- Emerging tool
- Near-term plan with a schedule and milestones more immediately beneficial or practicable to achieving WQS than a TMDL
- EPA accepts the plan
- On Kentucky's 303(d) list (with low priority for TMDL)

Category 4b Plan

- Long-standing tool
- Impaired waters with other pollution control requirements stringent enough to achieve WQS within a reasonable period of time
- EPA approves the plans
- Delisted from Kentucky's 303(d) list (no TMDL required)

Gunpowder Creek TMDL Alternative

Gunpowder Creek Watershed Plan Supplement: Implementation Plan to Address
Primary Contact Recreation (PCR) Impairments
February 12, 2018

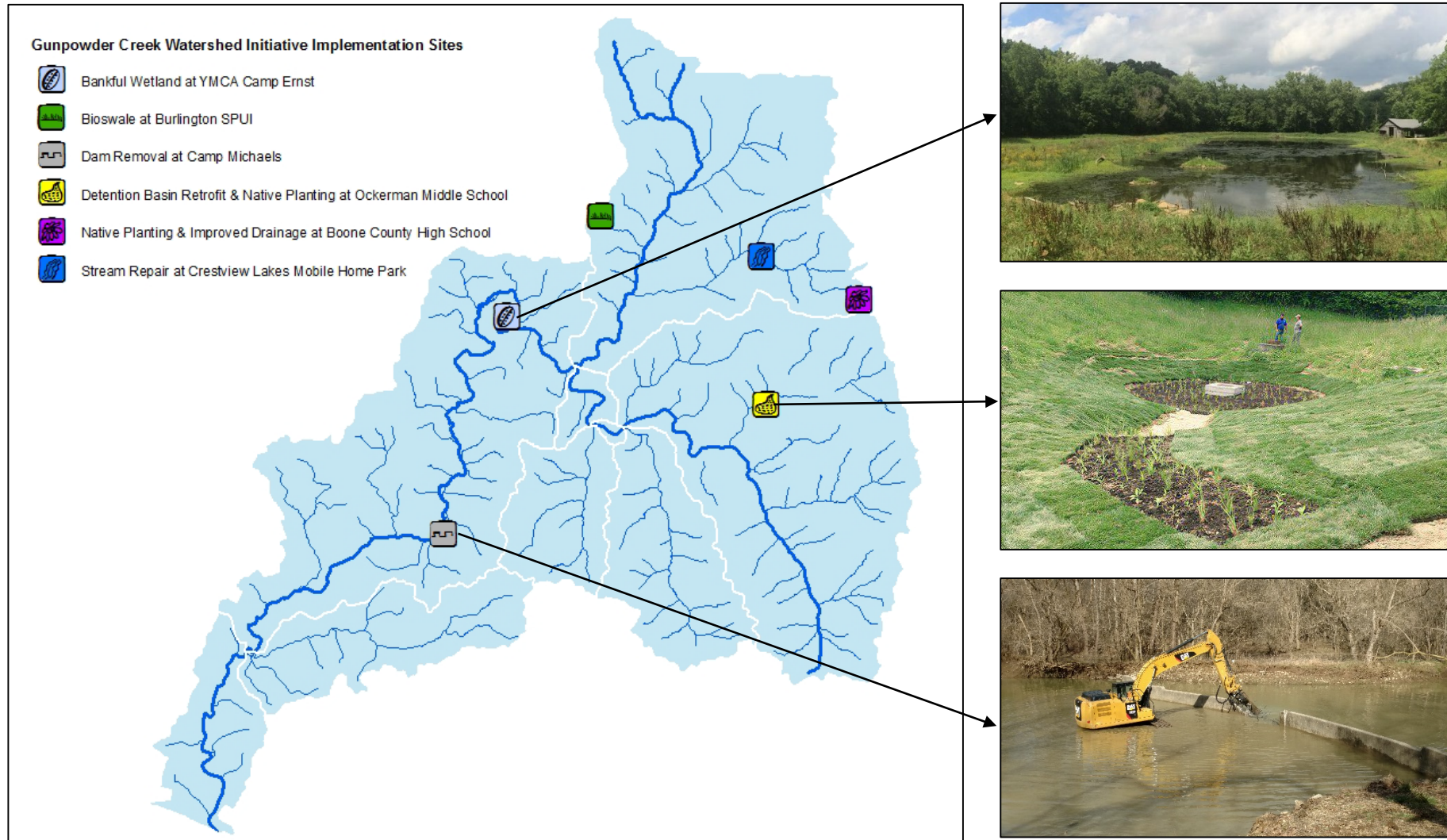
Contents

Gunpowder Creek Watershed Plan Supplement: Implementation Plan to Address Primary Contact Recreation (PCR) Impairments	1
1.0 Summary	2
2.0 Proposed 2016 303(d) Listed Segments for PCR	3
3.0 Additional Data Collection	5
4.0 Implementation to Address Sources of PCR Impairments	10
4.1 Potential Sources	10
4.2 Implementation Plan	15
4.3 Success Monitoring and Reporting	16
5.0 Appendices	18
Appendix A: Implementation Tables	19
Appendix B: Base Flow Characterization Field Monitoring & Sampling Plan for Northern Kentucky Watersheds Phase 3 (2016-2019)	27
Appendix C: Biweekly Sampling Field Monitoring & Sampling Plan for Northern Kentucky Watersheds (2015-2017)	77
Appendix D: Gunpowder Creek Watershed Implementation Grant Progress Report (February 1, 2018)	126

- Boone County Conservation District and SD1 developed a Primary Contract Recreation (PCR) Supplement
- 5-Alt Option - Submitted the Watershed Plan and PCR Supplement to Kentucky Division of Water and EPA Region 4 – Oct 2017
- Kentucky Division of Water approval and EPA R4 acceptance – Feb 2018

Next Steps

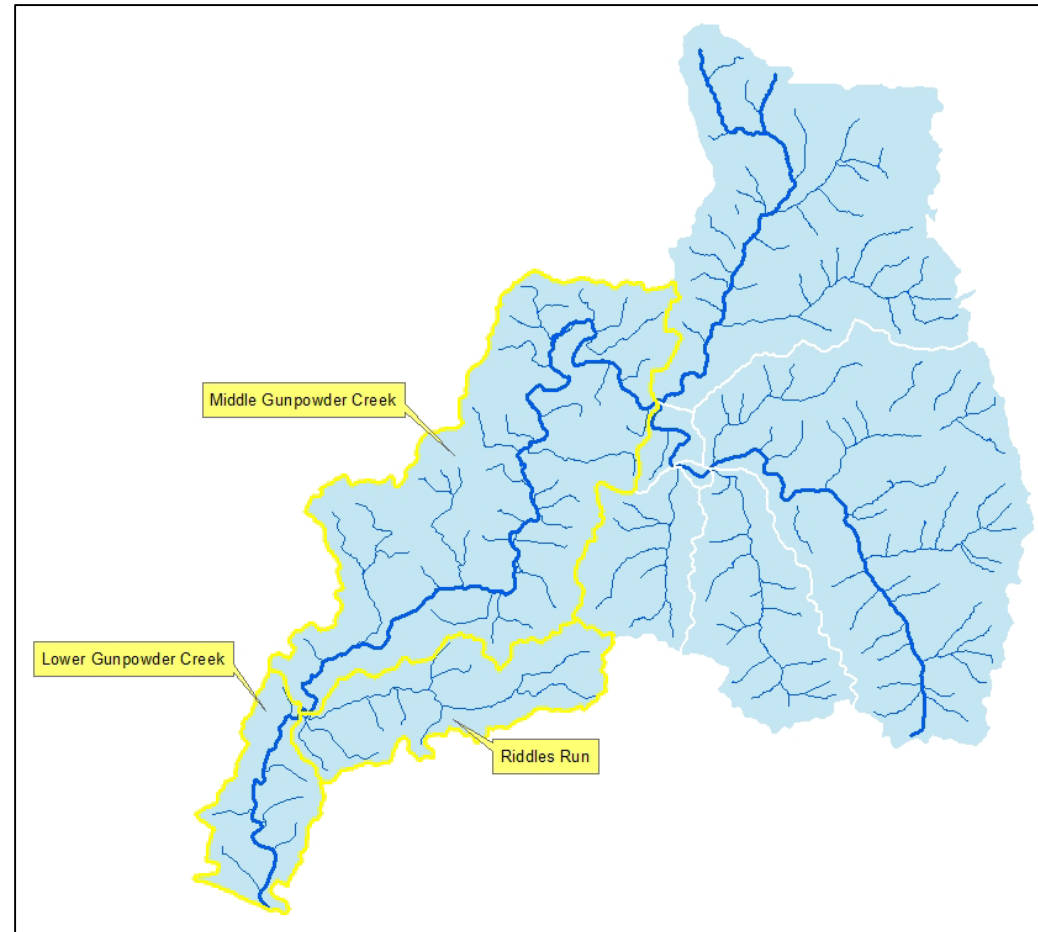
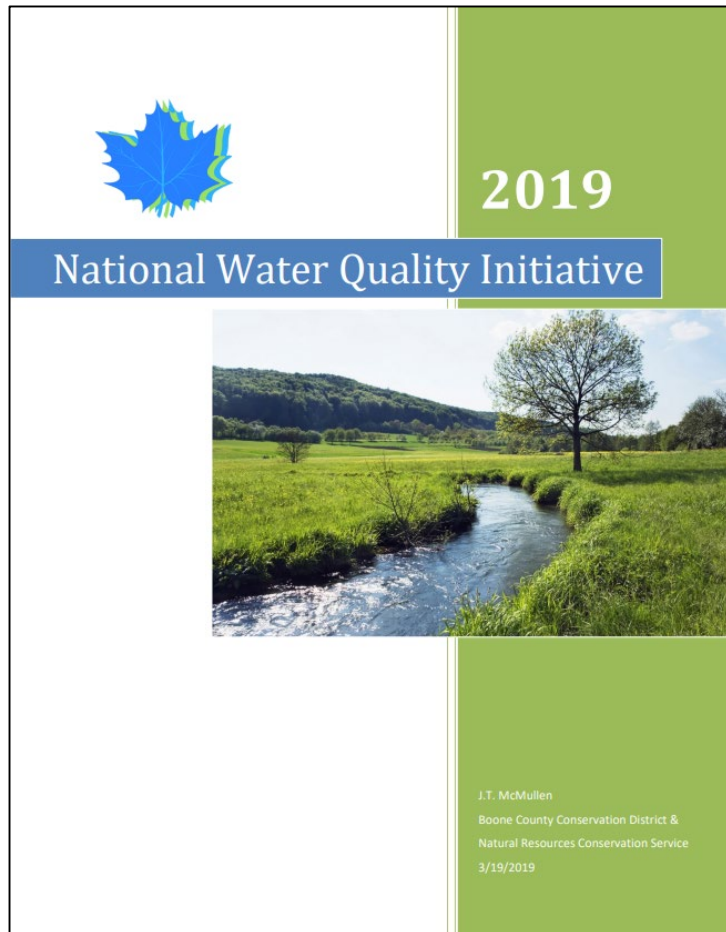
Continued Implementation – Boone County Conservation District



For more information: <http://bccdky.org/gunpowder-creek-watershed-initiative/>

Next Steps

Continued Implementation – NRCS National Water Quality Initiative (NWQI)



For more information: <http://bccdky.org/nwqi/>

Next Steps

Continued Implementation – Infrastructure Improvements and MS4 Permit Compliance

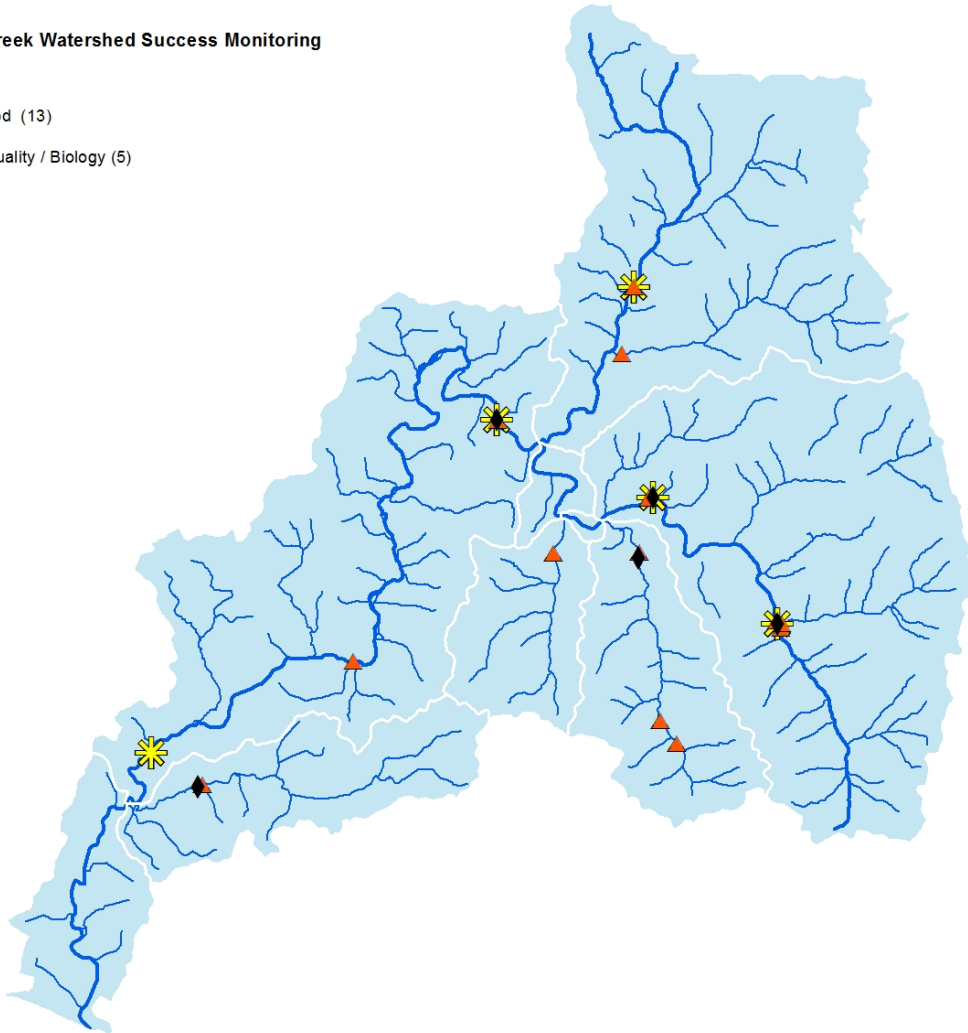
- Sanitary System Inspections, Repairs and Improvements
- Storm System Inspections, Repairs and Improvements
- MS4 Permit Compliance
 - Education, IDDE, Construction/Post-construction, Good Housekeeping



Success Monitoring and Reporting

Gunpowder Creek Watershed Success Monitoring

- ◆ MST (5)
- ▲ Hydromod (13)
- ✱ Water Quality / Biology (5)





Questions?