

# USACE WATER RESOURCES PROGRAMS, AUTHORITIES, & ASSISTANCE

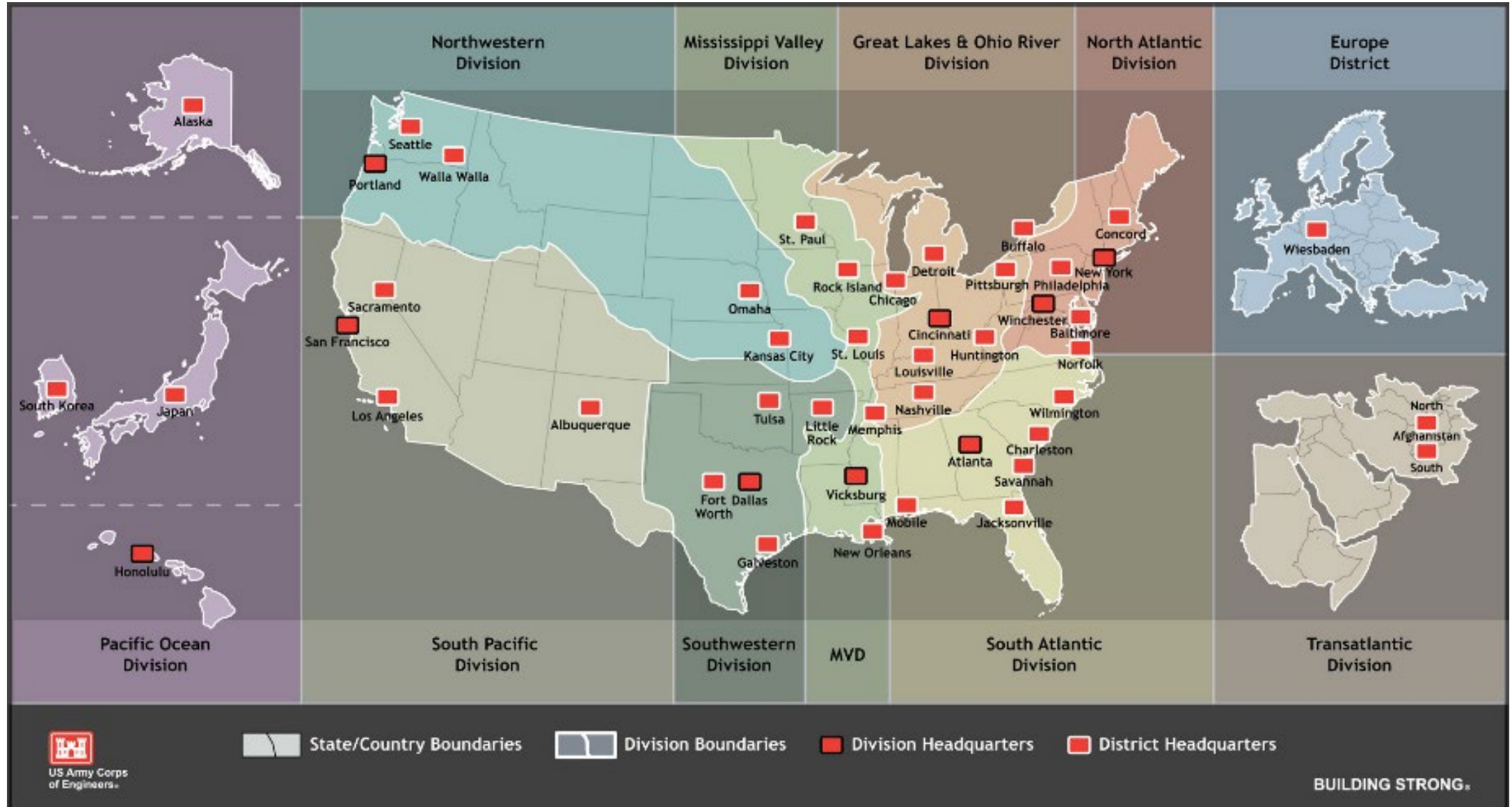
Brandon R. Brummett, P.E., PMP  
Outreach Coordinator  
Date: 10 May 2019



US Army Corps  
of Engineers®



# USACE DISTRICTS





Assistant Secretary of  
the Army (Civil Works)  
Washington, DC



USACE Headquarters  
Washington, DC



Great Lakes & Ohio  
River Division  
Cincinnati, OH  
( 9 Divisions)



Louisville District  
Louisville, KY  
(43 Districts)







# Military Program

- 306,000 Square Miles
- 7 Army
- 6 BRAC
- 5 Air Force
- 3 DOD
- National PM
  - US Army Reserve
  - US Air Force Reserve
  - DLA Strategic Materials





# LOUISVILLE DISTRICT MISSIONS

- **Support to Military Customers**

- US Army & US Air Force
- US Army & Air Force Reserve



- **Support to other Federal Agencies**

- EPA
- VA
- FEMA
- Others

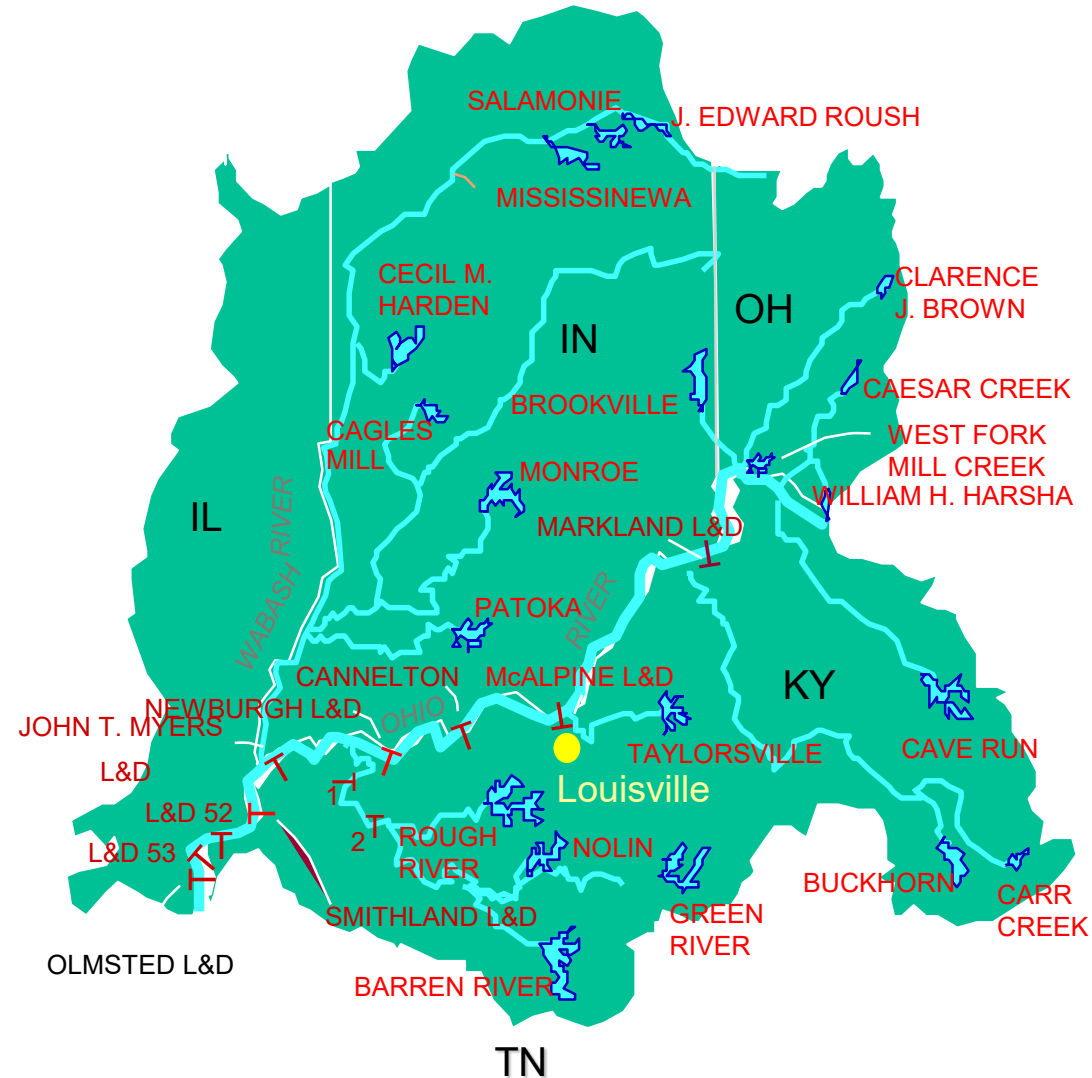
- **Environmental Missions**

- FUDS
- IRP
- BRAC





# CIVIL WORKS BOUNDARY





# OHIO RIVER MAINSTEM NAVIGATION SYSTEM

## General Plan and Profile

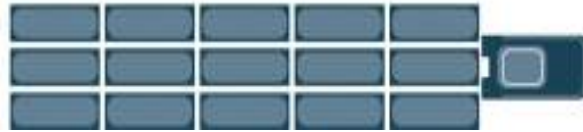




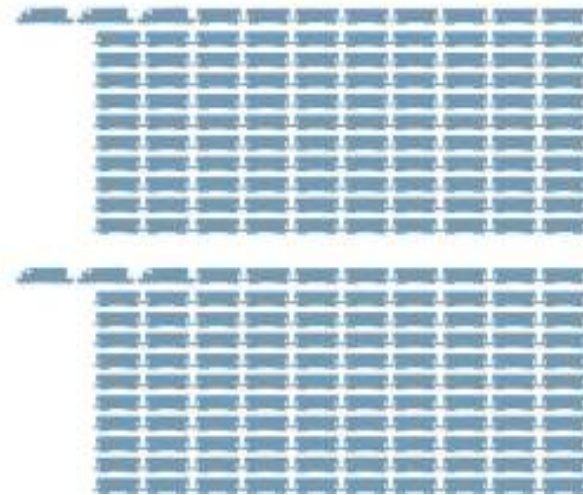
# HOW MUCH?



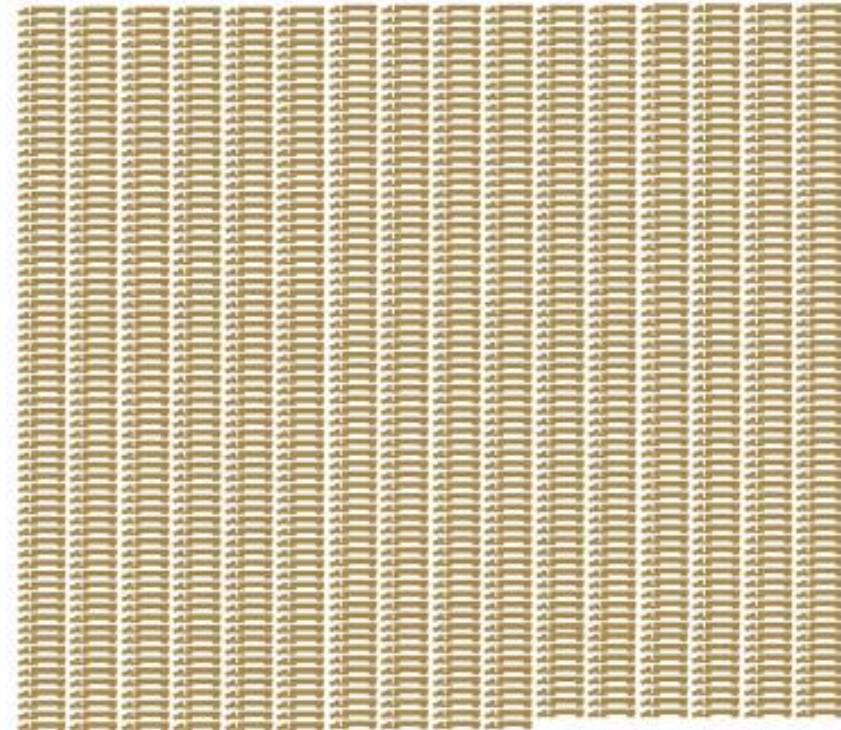
One 15-Barge Tow



216 Rail Cars + 6 Locomotives

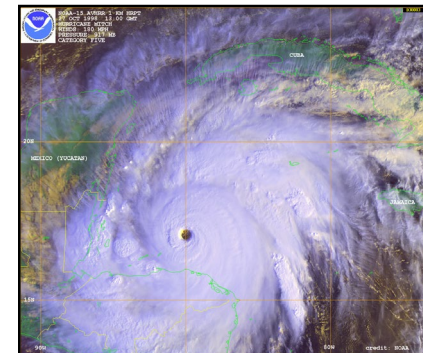


1,050 Large Semi Tractor-Trailers



# CIVIL WORKS MISSIONS

- Navigation
- Flood and Storm Risk Management
- Aquatic Ecosystem Restoration
- Watershed Planning
- Emergency Management
- Regulatory Program
- *Hydropower*
- *Recreation*





# IT DOESN'T TAKE AN ACT OF CONGRESS...



The Senate

The House of  
Representatives





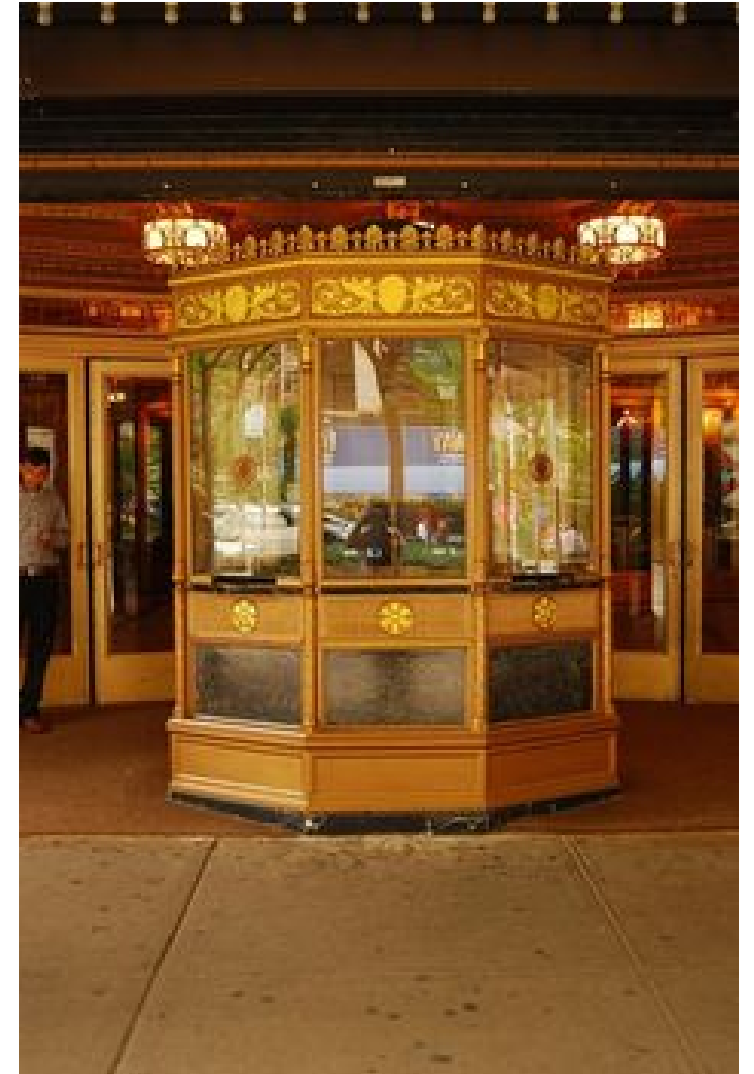
# IT TAKES AT LEAST TWO!

## Authorization

- Permission for Study, program, or project
- Water Resources Development Act (WRDA)
- Committee resolution

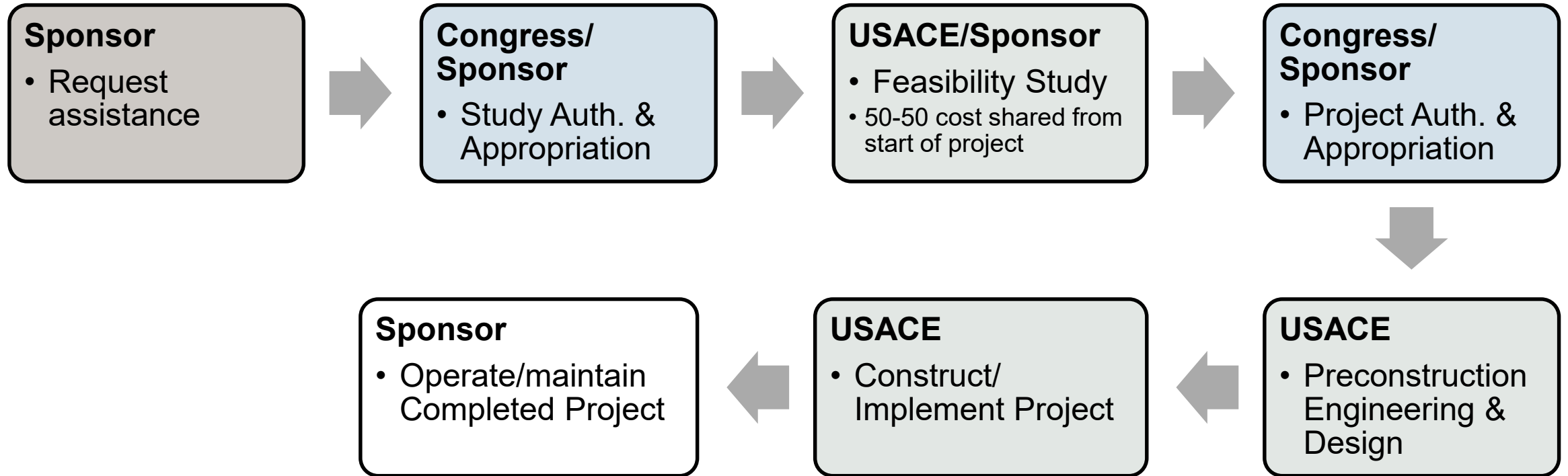
## Appropriation

- Approval to obligate and expend funds for an authorized study, program, or project
- Annual Energy & Water Development Appropriation Act (EWDA)





# Specifically Authorized Project Process





## Flood Protection Wall South Frankfort, KY

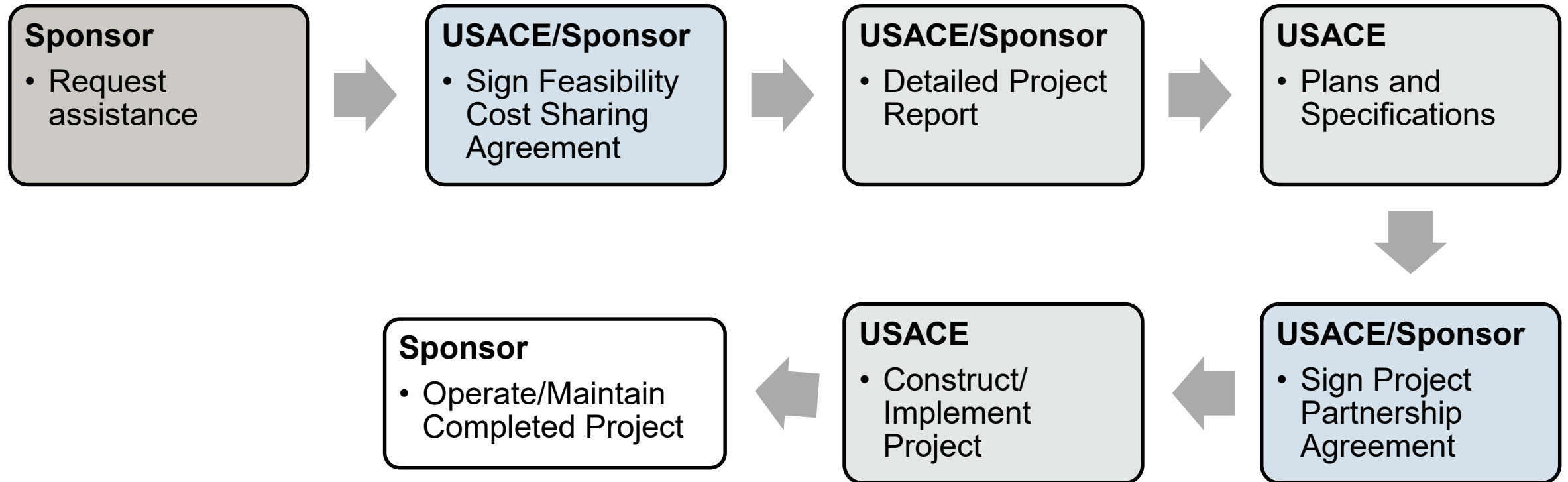




## Kentucky River Flooding March 2, 1997



# Continuing Authorities Project Process





# CONTINUING AUTHORITIES OVERVIEW

Authority	Description	Per Project Cost Limit (\$M)	Per Program Cost Limit (\$M)
Section 14	Emergency Streambank Stabilization	5	25
Section 107	Navigation	10	62.5
Section 205	Flood Risk Management	10	68.75
Section 208	Flood Snagging/Clearing	0.5	7.5
Section 206	Aquatic Ecosystem Restoration	10	62.5
Section 1135	Ecosystem Restoration	10	50





# Whitesburg, KY

## Pre-Section 14



# Whitesburg, KY

## Post Section 14





Whitesburg, KY

Post Section 14





# OTHER PROGRAMS & AUTHORITIES



- Environmental Infrastructure  
(Section 219, 594, 531)
- Planning Assistance to States (Section 22)
- Flood Plain Management Services Program
- Emergency Management (PL 84-99)
- Silver Jackets

[illegible]



# SHEPHERDSVILLE, KY STORMWATER STUDY



- Total Study Cost - \$100K
- Project consisted of formulation and review of stormwater alternatives for storm/sanitary sewers and outfall areas in the City of Shepherdsville, KY.
- Project was completed in FY 2014-2015







**Partners!**