



# 2025

# Ohio Stormwater Conference

*18th Annual*



**Presented by**



**May 8-9, 2025**

**Kalahari Resort & Conference Center**  
*Sandusky, Ohio*



# 489 MILES OF UNLIMITED STREAMING.



And our only  
buffering is riparian.



**Northeast Ohio  
Regional Sewer District**

@neorsd on social | [neorsd.org](http://neorsd.org)



# 2025 Ohio Stormwater Conference



## Presented by

Tinker's Creek Watershed Partners is a non-profit organization whose mission is to increase awareness and build support for the preservation and improvements of water quality, land use, and habitat value throughout the Tinker's Creek watershed.



The Ohio Stormwater Association is a group of public and private citizens dedicated to advancing the management of stormwater and related natural resources through education, leadership, watershed-based coordination, and technical assistance in Ohio. The Ohio Stormwater Association provides educational and networking opportunities for people focused on reducing the negative impacts of stormwater runoff.

## Acknowledgement

A special thank you to all of those who helped plan this event. Thank you to the speakers who have taken their time to present.

We also want to recognize all of our Sponsors and Exhibitors; without their participation this conference would not be possible.







With a Devotion to Safety, Environmental Responsibility, Production, and Quality, We Offer an Array of Specialized Services Across Various Industries.



# Capture Trash at the Source!



## Over 100,000 Installations throughout North America

Our Snout® system has been leading the charge in stormwater management for over 25 years. Designed to last, it captures pollutants at the source and reduces downstream pollution. For optimal performance, add the Bio-Skirt® and Turbo Plate®.

**Visit us at Booth 215**



☎ 800-504-8008 🌐 [bmpinc.com](http://bmpinc.com) 📍 9 Matthews Drive, Unit A1-A2 East Haddam, CT 06423



# CONTENTS

7	CONFERENCE SCHEDULE
8-13	SPONSORS and EXHIBITORS and MAP
19	CHANCES TO WIN!
21	KAYAK RAFFLE
35	CONTINUING EDUCATION INFORMATION
36	FACILITY MAP AND ROOMS
37	CONFERENCE PLANNING COMMITTEE
38-47	CONFERENCE AGENDA
42	80's THEME RECEPTION





# Redefining the Industry. **Transforming the Environment.**



WATER — drinking water, wastewater, stormwater, and wet weather management are essential functions for any community. That's why GPD is committed to conserving, preserving, purifying, and protecting water as our most valuable resource, not just for our generation but for future generations!

**Store. Convey. Treat. Maintain.**  
**One Water Focus.**



**GPD GROUP®**

ARCHITECTS • ENGINEERS • PLANNERS

    | [gpdgroup.com](http://gpdgroup.com)





# Conference Schedule

## Wednesday, May 7, 2025

9:00 a.m. - 11:00 a.m.	Kayak Tour
10:00 a.m. - 11:30 a.m.	Birding Tour
10:00 a.m. - 4:00 p.m.	MS4 Boot Camp
6:00 p.m. - 8:00 p.m.	Bourbon Event

## Thursday, May 8, 2025

8:30 a.m. - 9:00 a.m.	Opening
9:00 a.m. - 10:00 a.m.	Concurrent Sessions
10:00 a.m. - 10:30 a.m.	Break - Exhibit Hall
10:30 a.m. - 12:00 p.m.	Concurrent Sessions
12:00 p.m. - 12:45 p.m.	Lunch
12:45 p.m. - 1:15 p.m.	Exhibit Hall
1:15 p.m. - 2:45 p.m.	Concurrent Sessions
2:45 p.m. - 3:15 p.m.	Break - Exhibit Hall
3:15 p.m. - 4:15 p.m.	Concurrent Sessions
4:30 p.m. - 5:30 p.m.	Concurrent Sessions
5:30 p.m. - 7:30 p.m.	Reception in Exhibit Hall

## Friday, May 9, 2025

8:00 a.m. - 9:30 a.m.	Concurrent Sessions
9:30 a.m. - 10:00 a.m.	Break - Exhibit Hall
10:00 a.m. - 11:00 a.m.	Concurrent Sessions
11:10 a.m. - 12:10 p.m.	Concurrent Sessions





# Thanks to Our Sponsors

## PLATINUM SPONSORS



## GOLD SPONSORS



Civil & Environmental  
Consultants, Inc.



City of Toledo





## SILVER SPONSORS

BURGESS & NIPLE



CWT  
Training  
Academy



ECOSOLUTION



Jacobs



Gresham  
Smith



HZW Environmental  
Consultants

INDIANA • KENTUCKY • OHIO  
CONCRETE PIPE  
ASSOCIATION



STORMWATER  
SOLUTIONS



Environmental  
Protection  
Agency

ms consultants, inc.  
engineers, architects, planners

## BRONZE SPONSORS



AECOM



Architecture  
Engineering  
Environmental  
Land Surveying



FERGUSON  
WATERWORKS



Hazen



Michael Baker  
INTERNATIONAL



SUMMIT  
SOIL & WATER  
CONSERVATION DISTRICT



WADE  
TRIM



WOOLPERT



# Thanks to Our Sponsors and Exhibitors

## EXHIBITORS







BioSurvey  
Group



Architecture  
Engineering  
Environmental  
Land Surveying



Civil & Environmental  
Consultants, Inc.



ERICSSON



INDIANA • KENTUCKY • OHIO  
CONCRETE PIPE  
ASSOCIATION



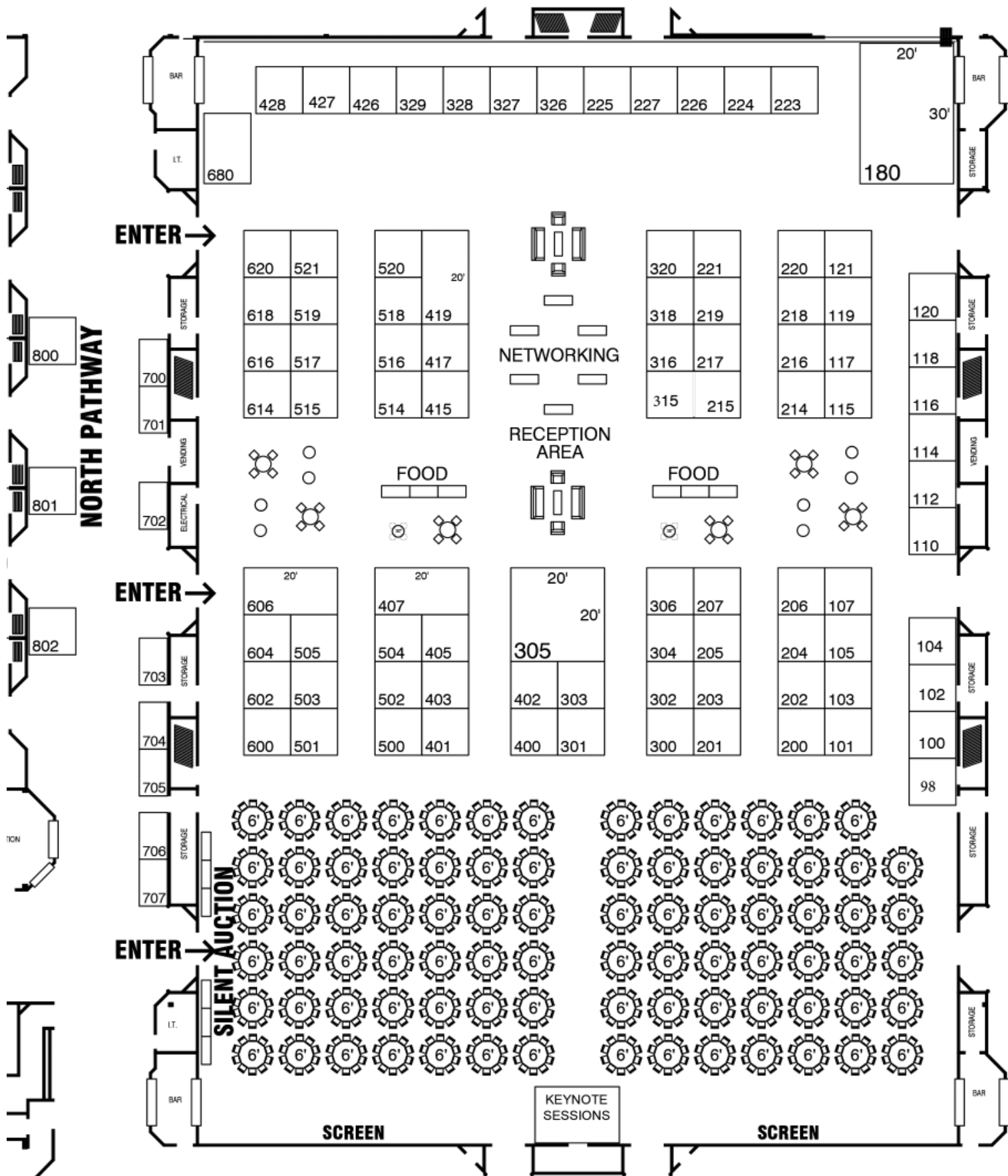
WOOLPERT



# EXHIBITOR BOOTH INFORMATION

ABT, Inc.	614	InstaTurf	227
ACO, Inc.	405	JDC Group	502
Advanced Drainage Systems, Inc.	305	JMT Inc.	706
AQUA DOC	101	Jones Lake Management	801
Atlas Technical	606	Kasco	219
BMP, Inc.	215	K.E.McCartney & Associates, Inc.	300
BL Companies	616	Kimley Horn	301
Biohabitats	329	Lindsay Precast	427
BioMicrobics, Inc.	216	Mack Industries	206
BioSurvey Group, LLC	600	Marks Construction	320
Brandstetter Carroll, Inc.	604	Meadville Land Service, Inc.	328
Brown Equipment Company	326	Meredith Brothers Inc./ InstaTurf	227
Butler County Storm Water District	704	ms consultants, inc.	403
CDM Smith	115	M Tech Company	180
Chagrin Valley Engineering, Ltd.	505	National Gunitite	602
CleanWay Environmental	226	NEORS	407
Civil & Environmental Consultants, Inc.	417	ODNR - Old Woman Creek Reserve	703
Clear Water Services	102	OEPA	802
Contech Engineered Solutions	419	OHM Advisors	303
Coyle SWPPP Professionals	302	Oldcastle Infrastructure	103
CTL Engineering	500	Ohio Public Works Commission	702
CWT Training Academy	426	OSWA	705
Davey Resource Group	316, 318	PaveDrain, LLC	98
Diamond Waterfronts	680	Precision Laser & Instrument, Inc.	120
Dynotec Inc.	100	Redi Rock Structures of OKI	117
Eco Solution Distributing	202	Renewed Outdoors, LLC	116
EJ	516	RES LLC	221
EJ Prescott	217	RETTEW	503
EMH&T	401	Rymar Waterworks Innovations	504
Envirocert	620	S&ME	121
Environmental Design Group	107	Storm Trap	415
Enviroscience	517	StormwaterBIOCHAR	119
Ernst Conservation Seeds	327	Storm Water Solutions	200
Ericsson Enterprise Wireless Solutions	118	Sweeping Corporation of America	707
Eurofins TestAmerica	519	Terracon	520
Faircloth Skimmer	501	Tinker's Creek Watershed Partners	110 & 112
Ferguson Waterworks	225	Trench Drain Systems	304 & 306
Flexamat	203	Unilock	205
FODS LLC	218	V3 Companies	114
Frog Creek Partners	402	Verdantas	515
Geoshack	518	Vodaland	207
GPD Group	315	Vortex Companies	223
Grande Water Management Systems	214	WateReuse Association	224
Hydra Tech Engineered Products	618	Wertz Geotechnical Engineering, Inc.	104
Hyfi	201	Wessler Engineering	514
HZW Environmental Consultants, LLC	428	Williams Creek Management	521
Indiana Kentucky Ohio Concrete Pipe Assoc.	400	Williams Forestry & Associates	220
Infratech Solutions LLC	105	Woolpert	204







# STORMWATER SOLUTIONS.

WEBSITE | NEWSLETTERS | DIGITAL MAGAZINE

## Sign Up Today For Free!

Dedicated to delivering the latest information on technology, products and trends in the **stormwater and erosion control industry.**



[stormwater.com/subscribe](https://stormwater.com/subscribe)



# Working with you to weather the storm.

Proudly partnering with you for Clean Water success for over 30 years.

## McMahon DeGulis<sup>llp</sup>

Attorneys | [www.mdllp.net](http://www.mdllp.net)

*Best Lawyers*<sup>®</sup> 2025 Recognition:

Louis L. McMahon | Cleveland | Environmental Law, Litigation-Environmental, Water Law

Lee A. Slone | Columbus | One to Watch, Environmental Law

Gregory J. DeGulis | Cleveland | Environmental Law, Litigation-Environmental

Wendy M. Lavey | Cleveland | Environmental Law

Erin M. McDevitt-Frantz | Cleveland | Litigation-Environmental

David E. Nash | Cleveland | Energy Regulatory Law, Environmental Law, Litigation-Environmental

## We're here for you.



Contech is the trusted partner  
you can count on for stormwater  
management solutions.

**CONTECH**<sup>®</sup>  
ENGINEERED SOLUTIONS  
A QUIKRETE<sup>®</sup> COMPANY

Let's get connected.  
800-338-1122 | [www.ContechES.com](http://www.ContechES.com)

Maggie Klanac, Stormwater Consultant  
[margaret.klanac@conteches.com](mailto:margaret.klanac@conteches.com) | 513-314-4781



**Marks**  
CONSTRUCTION, INC.  
330-273-3121 VALLEY CITY, OHIO

## SPECIALTIES

- STREAM AND WETLAND CONSTRUCTION, ECOLOGICAL RESTORATION
- STORM WATER AND GREEN INFRASTRUCTURE
- CONSTRUCTION FEASIBILITY AND ASSESSMENT
- PARK DEVELOPMENT AND TRAIL CONSTRUCTION

in



LET'S  
CONNECT

HDR

## Bridging the gap between idea + achievement

At HDR, we're helping our clients push open the doors to what's possible, every day.

hdrinc.com | Cleveland, Columbus, Cincinnati



Hargus Lake Dam Rehabilitation, Ohio Department of Natural Resources, Circleville, OH  
2023 ACEC Engineering Excellence Award Winner

OHIO DEPARTMENT OF NATURAL RESOURCES

## OHIO COASTAL TRAINING PROGRAM



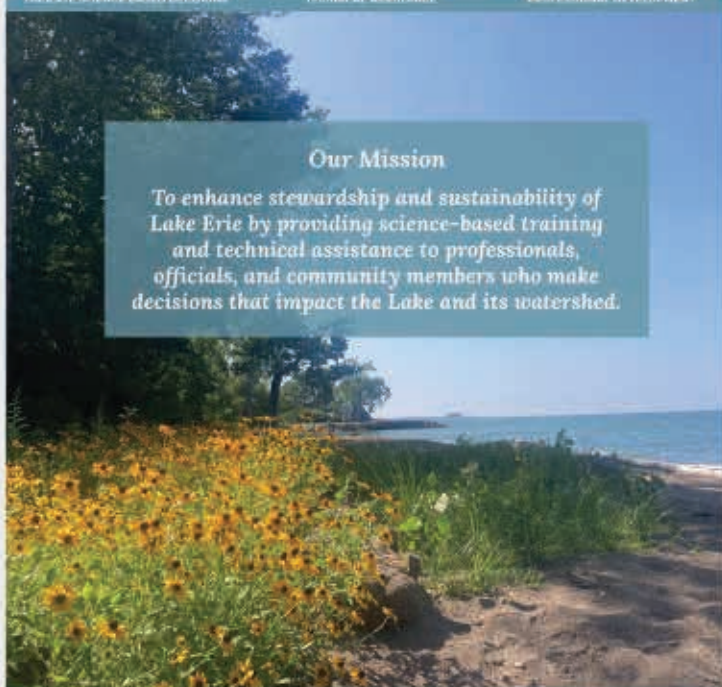
Facilitate Science-Based Decision Making

Technical Assistance

Professional Development

### Our Mission

To enhance stewardship and sustainability of Lake Erie by providing science-based training and technical assistance to professionals, officials, and community members who make decisions that impact the Lake and its watershed.



Sustainable Alternatives

Restoration Planning

Shoreline Stabilization



[ohiodnr.gov/coastaltraining](http://ohiodnr.gov/coastaltraining)






AECOM

# Clean water, local resources

Serving Ohio for more than 50 years, our water professionals are dedicated to helping clients solve their most complex stormwater challenges.

 [aecom.com](http://aecom.com)

Akron | Cincinnati | Cleveland | Columbus | Toledo

GALENA - COLUMBUS - LORAIN - CINCINNATI

[WWW.COLDWATERCONSULTANTS.COM](http://WWW.COLDWATERCONSULTANTS.COM)

STREAM RESTORATION  
WETLAND RESTORATION  
GREEN INFRASTRUCTURE  
STORMWATER MANAGEMENT  
GRANT WRITING  
WATERSHED PLANNING  
ENVIRONMENTAL PERMITTING  
CONSTRUCTION SERVICES



**COLDWATER**  
CONSULTING, LLC Registration



K-12  
Outreach  
Career Development



Services  
Customization  
Program Development

**Stormwater Training & Certifications**

**Outreach & Education Program**

**Tracking & Reporting Service**

**Stormwater Geek Wear**



**STORMWATER DEFENDERS**

[CWTAcademy.com](http://CWTAcademy.com) [PUDLEOutreach.com](http://PUDLEOutreach.com) [StormwaterDefenders.com](http://StormwaterDefenders.com)

## Explore with us



### 4 Locations Serving Ohio

Cleveland  
(216) 459-8378

Akron  
(330) 718-8116

Columbus  
(614) 863-3113

Cincinnati  
(513) 321-5816

Nationwide  
**Terracon.com**

Facilities  
Environmental  
Geotechnical  
Materials

**Terracon**



Float Operated Bending Weirs at CSO 181 in Cincinnati, Ohio

# BENDING WEIR

## OVERFLOW CONTROL

Passive devices for **CSO** abatement  
and **SSO** elimination.

**THE CLEAR  
SOLUTION**



Overflow mitigation



Decrease in water pollution



Backflow prevention



Odor control

**Grande**  
Water management systems  
[www.grandeinc.com](http://www.grandeinc.com)

**SMITH**  
ENVIRONMENTAL  
[www.go-smith.com](http://www.go-smith.com)

**1-855-315-1115**  
[info@grandeinc.com](mailto:info@grandeinc.com)

 **OHIO**  
stormwater  
conference  
See us at booth 214



# Chances To Win!!

---

We are pleased to offer you opportunities  
to win some great prizes at this years conference

This year, we have  
several contests!

1

## PASSPORT

Please follow the directions on your passport book (in packet), visit booths, and enter to win some cool prizes.

2

## PHOTO CONTEST

Send an awesome photo of anything happening at the onference and send via text or email. The best photo will win a prize. Send the photo with your name and phone number to either [harry@tinkerscreek.org](mailto:harry@tinkerscreek.org) or text to 216-385-5248.







*The community impact people.*

envdesigngroup.com | 800.835.1390



## Stormwater Services

Environmental Design Group has the experience and ability to address current flooding challenges while proactively planning for future risks. We work collaboratively from concept to construction with public and private entities in the following markets:

- Government/Municipal, Parks & Recreation, Manufacturing & Industrial, Economic Development, and Transportation.

### Contact us for more information on any of the following services:

- Stormwater Drainage Study & Master Planning
- Stormwater Utility Development & Implementation
- Erosion Control / Bank Stabilization
- Hydraulic & Hydrologic Study
- Floodplain Delineation & Permitting
- Floodplain, Wetland & Stream Restoration Design
- Green Infrastructure Design
- Dam Safety & Rehabilitation
- Grant Funding & Strategic Consulting

*Civil engineering, design and planning services throughout Ohio.*



# Tinker's Creek Watershed Partners

## 2025 Board of Directors

Rebecah Troutman - President  
Ana Burns - Vice President  
John Day - Treasurer  
Karen Farkas- Secretary  
Samantha Robbins - Past President  
Chris Chaney  
Mike Cunningham  
Rich Greco  
Joshua Herchl  
Katherine Holmok  
Erik Lange  
Elizabeth Myers  
Jesús F. Sánchez  
Alyson Scheibe

## Staff

Dr. Erica Matheny- Executive Director  
Matt Siefert - Watershed Coordinator  
Angela Brodie - NOWCorps Program Director  
Claire Ilersich - NOWCorps Coordinator  
Allison Stark - Administrative Coordinator  
Kristi Reklinski - Watershed Steward and Educator  
Cori Slaw - Watershed Steward and Educator  
Kraken - Chief Mousing Officer

**Get involved - Become a member today!**

## Kayak Raffle

[tinkerscreek.org](http://tinkerscreek.org)

~ Purchase a raffle ticket to win a kayak!!  
~ Come to the Tinker's Creek Exhibitor  
Booth to purchase a ticket!



## Thank You - Stone Environmental Engineering & Science

Stone Environmental graciously donated the kayak that is being raffled as part of our fund raiser. We greatly appreciate this donation and Stone Environmental's continued support of the Tinker's Creek Watershed Partners.







## Wetland and Natural Resources Services

At Atlas, our environmental specialists can handle the details so you can focus on your overall stormwater program. From regulatory compliance and permitting to site and condition assessments, we're as passionate as you are about preserving our natural assets. Let us help you achieve regulatory compliance from start to finish.

- Wetland and stream consulting and permitting.
- Wetland, prairie and meadow restoration.
- Natural and cultural resource surveys.
- National Environmental Policy Act analysis and documentation.
- Environmental site assessments.
- Remedial investigations and feasibility studies.

Meet our Atlas team at booth 606.

To learn more about Atlas  
visit [www.oneatlas.com](http://www.oneatlas.com)  
and follow us on  
LinkedIn | X | Facebook.





verdantas

## ► Comprehensive Stormwater & Watershed Management Solutions

Verdantas.com



## More Than Compliance

**Davey Resource Group, Inc. offers a full range of stormwater services that cover everything from compliance to maintenance, including:**

- Green Infrastructure Design/Build, Inspection and Maintenance
- SWPPP Design, Inspection and Maintenance
- Federal, State, and Local Stormwater Permitting and Compliance
- 401/404 Permitting and Wetland Delineation
- MS4 and SWPPP Compliance
- Grants and Funding Strategies
- Watershed-Scale Asset Management
- Design/Build Stream and Wetland Restoration
- Natural Areas Restoration and Maintenance
- GIS Inventory and Analysis
- Professional Civil Engineering, Surveying and Landscape Architecture
- Nine-Element Based Nonpoint Source Watershed Planning

SCAN TO  
LEARN MORE



### CONTACT DAVEY RESOURCE GROUP TODAY

**BEKAH STRAIT**, Regulatory Team Lead | 330-673-5685 ext. 8874 | [bekah.strait@davey.com](mailto:bekah.strait@davey.com)

**CHRISTINA ZNIDARSIC**, Design/Build Team Lead | 330-673-5685 ext. 8034 | [christina.znidarsic@davey.com](mailto:christina.znidarsic@davey.com)

[www.daveyresourcegroup.com/northern-ohio](http://www.daveyresourcegroup.com/northern-ohio)

**DAVEY**   
Resource Group



# REGIONAL STORM WATER COLLABORATIVE OF SOUTHWEST OHIO AND NORTHERN KENTUCKY

The Regional Storm Water Collaborative (RSWC) is comprised of storm water districts, municipalities, and soil and water conservation districts across Southwest Ohio and Northern Kentucky. RSWC created [SaveLocalWaters.org](http://SaveLocalWaters.org) to raise awareness about water quality issues in the Ohio River Valley.



By becoming a member of the Regional Storm Water Collaborative, you can work with us to launch innovative projects, media campaigns, and public outreach around local water conservation issues. For more information on becoming a member contact Sara Fehring ([sara.fehring@hamilton-co.org](mailto:sara.fehring@hamilton-co.org)).

## CURRENT MEMBERS

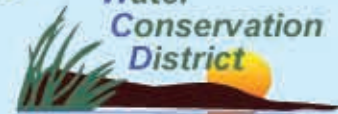


HAMILTON COUNTY  
Storm Water District

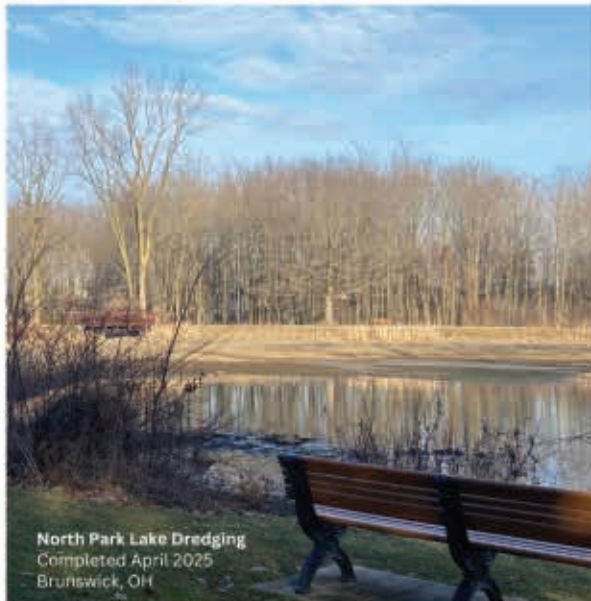
City of Hamilton  
BUTLER COUNTY, OHIO



Clermont S.W.C.D.  
Soil & Water  
Conservation  
District







North Park Lake Dredging  
Completed April 2025  
Brunswick, OH

## Stormwater Services Include:

- Watershed Modeling
- Detention Basin and Storm Sewer Design
- Stream Stabilization and Debris Rack Design
- Green Infrastructure Design
- Lake Dredging and NEPA Permitting
- Field Investigations and Inspections
- Floodplain Analysis and FEMA Permitting
- OEPA NPDES Permitting
- Project Funding

22999 Forbes Road  
Oakwood Village, OH 44146  
440-439-1899  
info@cvelimited.com

cvelimited.com

# PIPELINE JETTING CAMERA INSPECTION EXPERT OPERATED SERVICES



800.972.3800

PORTAKLEEN.COM

## EXPERTISE THAT SAVES YOU TIME AND MONEY

For more than 55 years, RETTEW has lead the industry in providing cost-effective solutions for a wide range of stormwater management challenges, keeping your budget and timeline at the forefront.



### STORMWATER DESIGN

RETTEW's hydrologic and hydraulic engineers provide extensive experience in zoning, land development regulations, permitting, stormwater design, and erosion control to ultimately determine the best solution.



### PERMITTING

Our environmental permitting team works with jurisdictional agencies to achieve your various NPDES/stormwater, wetlands, or USACE permitting needs.



### COMPLIANCE

RETTEW's CPESC staff and environmental compliance experts ensure your projects conform to federal, state, and local regulations.

Pictured: Muskingum Watershed Conservancy District  
Piedmont Lake Boat Launch Ramp Parking Area

**RETTEW**  
OH - PA - WV



Contact us today!  
rmastowski@rettew.com

330-754-2363  
rettew.com |





# CERTIFICATIONS FOR THE PROMISE OF A GREENER TOMORROW.



[WWW.ENVIROCERT.ORG](http://WWW.ENVIROCERT.ORG)

For more information about ECI and Professional Certifications, please visit [www.envirocert.org](http://www.envirocert.org), email [info@envirocert.org](mailto:info@envirocert.org), or contact ECI's office at (279) 888-6911.

Learn more at [fishbeck.com](http://fishbeck.com)

**fishbeck** is engineering the future.  
building  
constructing  
envisioning  
innovating



## DELIVERING VALUE TO CLIENTS IN THE BUILT ENVIRONMENT

For nearly 40 years, BL Companies has been an award-winning leader in delivering high-quality, integrated architecture, engineering, environmental, land surveying, planning and consulting services for land development, building design and infrastructure projects. Our firm has been providing a wide range of services including:

Civil Engineering | Hydraulics & Drainage | Highway & Bridge Design  
Construction Engineering | Construction Staking | As-built Surveys  
Wetland Delineation & Permitting | Phase I Site Assessments

*Employee owned. Client driven.*



Architecture  
Engineering  
Environmental  
Land Surveying

BL Companies, Inc. | 234.294.6340  
[blcompanies.com](http://blcompanies.com)

3755 Boettler Oaks Drive, Suite G, Uniontown,  
Ohio 44685

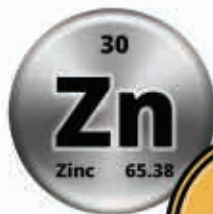


Stormwater **BIOCHAR**.com

Biochar

STORMWATER TREATMENT

**FILTER  
MEDIAS**



Up to **99.9%**  
Heavy Metal Removal



**Simple. Proven. Effective. Affordable.**<sup>TM</sup>

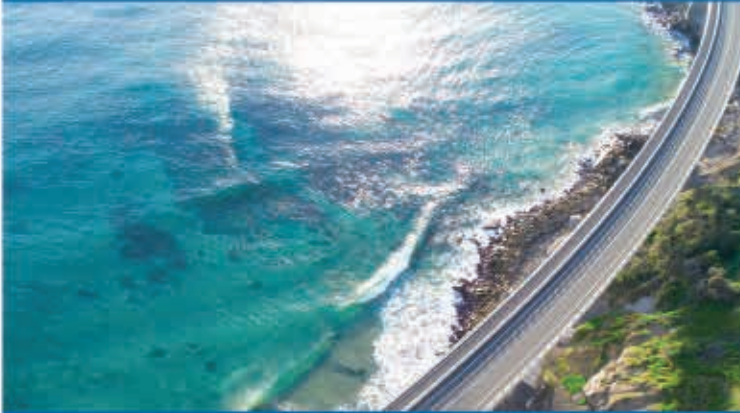


treating  
STORMWATER  
WITH BIOCHAR  
SINCE 2010

info@  
Stormwater  
**BIOCHAR**.com



**A OneWater  
future, today.**



Follow us @JacobsConnects | [jacobs.com](https://www.jacobs.com)



**Jacobs**

Challenging today.  
Reinventing tomorrow.



Providing Smart, Sustainable Solutions for  
Communities' Essential Infrastructure



Proudly leading KY watershed  
drainage design for Brent Spence  
Bridge Corridor project

**Gresham  
Smith**

Join Our Team



**GEOTECHNICAL ENGINEERING**

**DRILLING + TEST PITS**

**SOIL INFILTRATION TESTING**

**FIELD ENGINEERING**

**CONSTRUCTION MATERIALS TESTING**

**MUNICIPAL INSPECTIONS**

**SOILS LABORATORY**

**OHIO LOCAL  
EXPERIENCED + EQUIPPED**

**330.991.0041 | [OFFICE@WERTZGEO.COM](mailto:OFFICE@WERTZGEO.COM)**

**[WERTZGEO.COM](https://www.WERTZGEO.COM)**



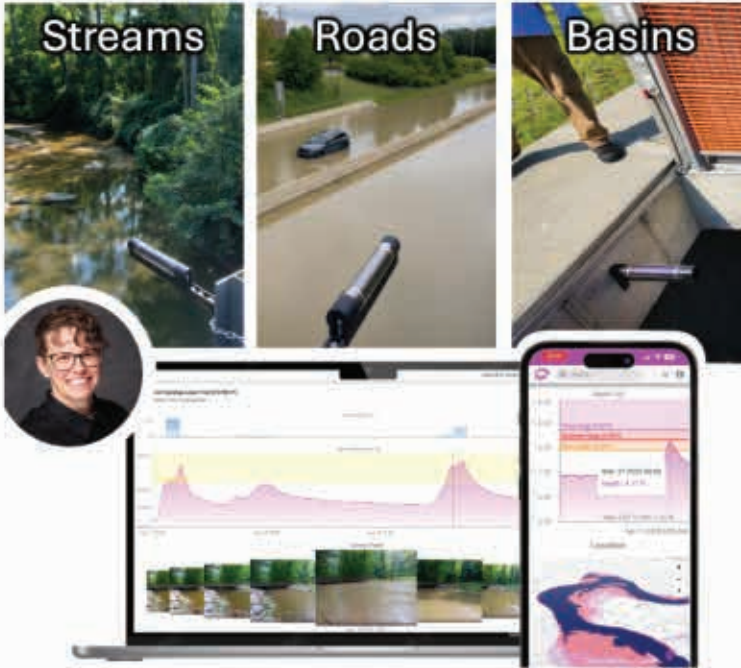
Serving the residents of  
Deerfield Township, Ohio  
since 2003.





## Storm & Flood Monitoring Services

Live Demo @ 📍 Our Booth & 🗣️ Our Talk



\$1495/yr | <https://hyfi.io>



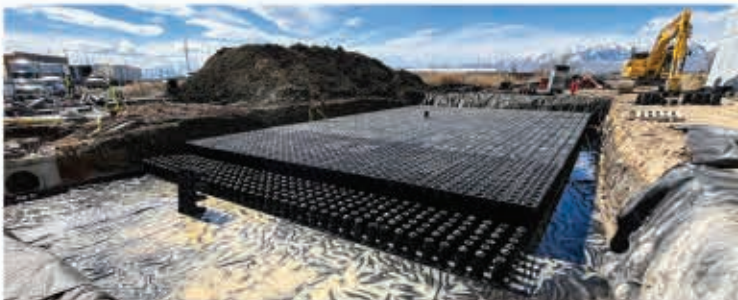
## ECOSOLUTION

**YOUR PARTNER FOR  
STORM WATER MANAGEMENT  
AND COMPLIANCE**

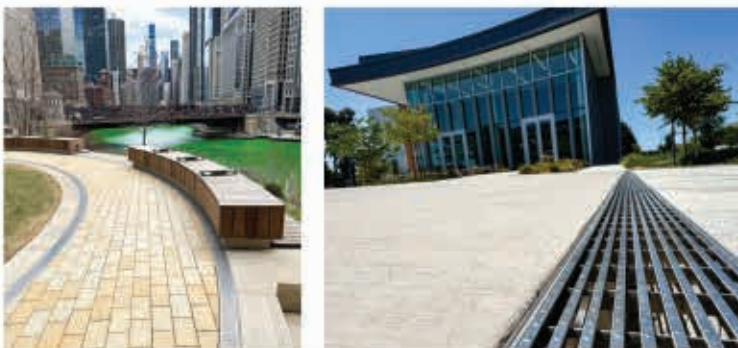
Dedicated Team of Water & Compliance Experts  
pH Adjusters // Oxidizers // Solids Separation  
Traditional & Aluminum-Free Flocculants  
Pond Curtains // Automated Treatment Systems  
Fleet of Owned Equipment & Expert Drivers

LEARN MORE

[EcoSolutionDistributing.com](https://EcoSolutionDistributing.com)



Geocellular Stormwater Storage Product for Detention, Retention, Reuse, & Infiltration Systems



Modular, Grated Trench Drain Systems



Visit us at  
Booth #405



# Together we deliver

**Brown AND Caldwell**

Engineers | Scientists | Consultants | Constructors  
100% Environmental | Employee Owned | [BrownandCaldwell.com](https://BrownandCaldwell.com)



## BLUE-GREEN ROOFS

1

# permavoid

CAN CREATE

## SIX RESILIENT WAYS TO MEET LOW IMPACT DEVELOPMENT GOALS

### PODIUM DECKS

2

### URBAN TREES

3

### LID LANDSCAPES

4

### LID HARDSCAPES

5

### ATHLETICS & PARKS

6

Permavoid structural cells provide increased storage and deliver precious water back to landscapes through capillary cylinders to create the most sustainable cities of the future.

FIND OUT MORE:  
**ABTDRAINS.COM**  
800-438-6057

**ABT, INC.**  
WATER MATTERS 

  
**WOOLPERT**

ASSET MANAGEMENT

NPDES SERVICES

STORMWATER DESIGN

STORMWATER MODELING

STORMWATER PROGRAM MANAGEMENT

SURFACE WATER MONITORING

For more information, please visit  
<https://woolpert.com/markets/water/>  
or scan our QR code



 **WADE  
TRIM**

800.482.2864  
[www.wadetrim.com](http://www.wadetrim.com)  
Cincinnati • Cleveland • Columbus



**ENGINEERING STRONGER COMMUNITIES**

For nearly a century, we've been solving complex engineering challenges to maximize the value of your infrastructure investments. We adapt our work processes to fit the unique demands of each project using a collaborative, friendly style. The result? Solutions you can stand behind.





## Meet Our Stormwater Team

The **City of Toledo** is home to about 265,000 people and sits within the Maumee and Ottawa River watersheds, which flow into Lake Erie. The stormwater team manages runoff that enters our storm system, helping to **keep our local waterways clean and healthy**. We're proud to serve as a resource and **environmental leader** for our community and beyond.

### Program Highlights

#### Outreach & Education

71 events reaching  
7,500 people

#### Water Quality Monitoring

3 rivers sites monitored  
quarterly, 1 ditch weekly

#### Pollution Detection & Elimination

328 inspections total with  
2 sources eliminated

#### Construction Stormwater Controls

463 inspections total

#### City Facilities & Operations

104 inspections at  
26 city-owned sites

#### Industrial & Commercial Site Oversight

58 inspections including  
25 NPDES inspections

### Our Team

Our team works to protect the water we use every day.

#### Commissioner

Abed A. Semaan

#### Chief

Regina Collins

#### Stormwater Coordinator

Edith Kippenhan

#### Senior Environmental Specialists

Marilyn DuFaur, LaShawna Weeks, Todd Haggard

#### Environmental Specialists

Angela Tucker, Nathanael Semaan, Steven Wilkes, Wei Zhang, Darryl Crooks, Sarah Williams

#### Environmental Technicians

Anthony Marino, Jennifer Bliss, Dean Bobzean, Brian Krasniewski, Emily Manner



# Coyle SWPPP

PROFESSIONALS

## Our Services

- SWPPP Design Services
- Erosion & Sediment Control Inspections
- Civil Engineering Consulting
- Personalized Training

**(513) 942-2333**

**[www.coyleswppp.com](http://www.coyleswppp.com)**

**WEST CHESTER, OH  
AKRON, OH**

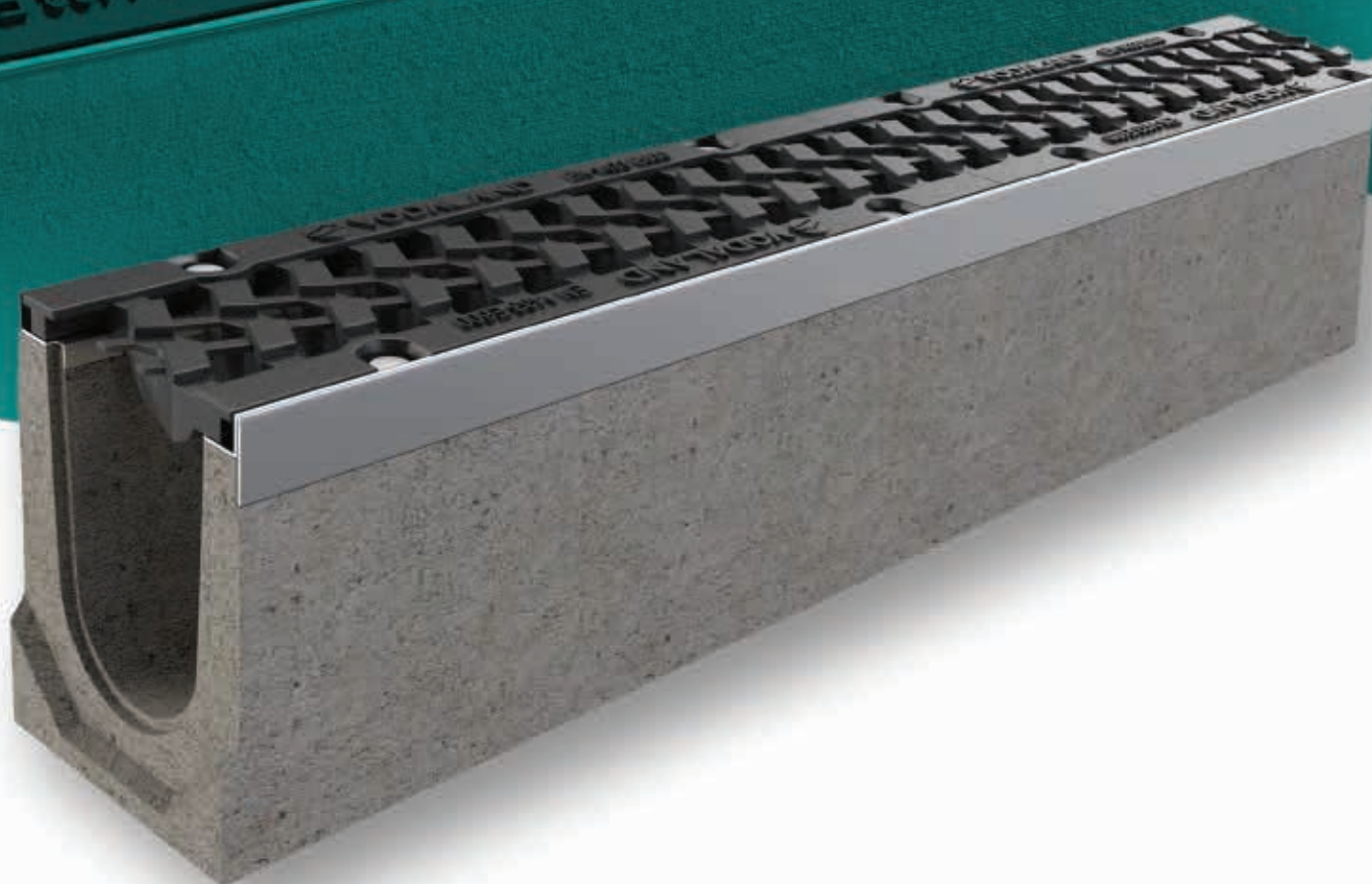




# At Vodaland We Make Water Solutions Easy!



Learn more at [Vodaland-USA.com](http://Vodaland-USA.com)



 **VODALAND**





## WILLIAMS FORESTRY & ASSOCIATES

**Williams Forestry & Associates** has been a trusted leader in the reforestation industry for over 45 years, with strategically located offices in Georgia, Ohio, Pennsylvania, and West Virginia.

To date, we have planted over **500 million trees**, playing a vital role in sustainable forestry and environmental restoration. Each season, our commitment to excellence and efficiency has reinforced our reputation for delivering high-quality results.

Our success is driven by **technical expertise, rigorous quality control, and a dedicated workforce**—ensuring that every project is completed safely, effectively, and on time. At Williams Forestry & Associates, we don't just plant trees—we cultivate the future.

Lindsey White  
Director of Development

304-282-5119

[www.wfatrees.com](http://www.wfatrees.com)



## Stormwater Management with Native Plants:

- slows water movement
- increases soil water infiltration
- prevents erosion.



**ERNST  
SEEDS**

800-873-3321

[sales@ernstseed.com](mailto:sales@ernstseed.com)





# Transforming The Natural Environment

Through our design/build/manage approach, we implement successful watershed level projects that improve flood control, water quality, habitat, and ecosystems for generations to come.

Civil Engineering

Landscape Architecture

Surveying

Nature Based Solutions

Wetlands & Ecology

Ecological Restoration

Contracting & Construction  
Management

Municipal Consulting

Highways & Traffic

**V3CO.COM**



## Progressive and comprehensive watershed planning & design services:

Complex modeling using historical rainfall and  
accounting for changing weather patterns

Flood damage predictions and mitigation

Stream channel assessments and stabilization to  
protect critical infrastructure

Public involvement and education

Assessment of water quality and habitat impairments

Regulatory compliance



Explore the next great step in your career at [emht.com/careers](http://emht.com/careers).



# Continuing Education Information

Please track the educational sessions that you attend and enter the total number of hours on the certificate for your records. The certificate can be found on the link at the landing page.

- A certificate of attendance will be available for download and at the conference
- Live webinar attendance records will be available for download for Distance Learning Credits

More information can be found at: <https://ohstormwaterconference.com/ceu-info/>



## CERTIFICATE OF ATTENDANCE

This certifies that:

---

Has earned \_\_\_\_\_ hours of continuing education credit

*Harry Stark*

---

Signature

May 9, 2025

---

Date

The Ohio Stormwater Conference is a three-day conference that provides training and discussions on Best Management Practices for Local Land Use Planning, low impact development, and stormwater management. This conference is relevant to the practice of civil engineering, planning, and landscape design, to partially fulfill Continuing Professional Development (CPD) requirements for Ohio Professional Engineers, EnviroCert Certifications, Surveyors, Certified Planners (AICP), Landscape Architects, and other related professions. The Ohio State Board of Registration for Professional Engineers and Surveyors does not pre-approve CPD courses nor does the board pre-approve CPD providers. Each registrant is responsible to make sure that the courses they take meet the requirements specified in O.R.C. 4733.151. It is the individual's responsibility to provide supporting material as to the sessions and hours attended.



# Layout of Convention Center



**Orange Room:** Watershed Planning and Restoration

**Nile Room:** Stormwater Practices, BMPs, Planning & Design

**Zambezi Room:** Legal; Green Infrastructure

**Aloeswood Room:** Stream and River Restoration and Science

**Rosewood Room:** Modeling and Research; Monitoring, Inspection, and Maintenance

**Zebrawood Room:** Climate Change, Resiliency, and Sustainability; Transportation



# Conference Planning Committee

## Conference Chairs

---

Harry Stark, City of Aurora / Tinker's Creek Watershed Partners / Ohio Stormwater Association

Allison Stark - Assistant Chair; Tinker's Creek Watershed Partners

## Planning Committee

---

Ana Burns - Chair, Abstract and Agenda Committee  
Davey Resource Group, Tinker's Creek Watershed Partners  
Ohio Stormwater Association

Jeff Duke  
Raftelis

Jason Fyffe  
Ohio EPA

Suzanne Hoehne  
Biohabitats

Katherine Holmok  
Kimley-Horn, Tinker's Creek Watershed Partners

Emily Kuzmick  
Ohio Department of Natural Resources

Bob Lentz  
Butler County Storm Water District, Ohio Stormwater Association

Katie Mackey  
Davey Resource Group

Erica Matheny  
Tinker's Creek Watershed Partners

Mark McCabe  
JEO Consulting Group, Ohio Stormwater Association

Vicky McCauley

Lou McMahon  
McMahon DeGulis

Pat Nortz  
Otisco Engineering

Jonathan Prier  
Ohio Department of Transportation

Joe Reitz  
OHM Advisors

Mark Rufener  
K.E. McCartney & Associates, Inc.

Wesley J Sluga  
Ohio EPA

Dana Stayer  
StormTrap

Bekah Strait  
Davey Resource Group

Becah Troutman  
Holden Arboretum

Katherine Zodrow  
ECO Consulting



# Ohio Stormwater Conference Technical Agenda

8:30 - 9:30 am Opening - Harry Stark

	Watershed Planning and Restoration Orange Room	Stormwater Practices, BMPs, Planning & Design Nile Room	Legal Zambezi Room
9:00 - 10:00 am 1.0 CEU	<p>From Planning to Implementation: Case Studies in NPS-IS (30 minutes)</p> <p>Deanna Bobak Civil &amp; Environmental Consultants</p> <hr/> <p>From a School and a Soccer Field to Reclaimed Greenspace (30 minutes)</p> <p>Ellery Schneider and Anthony Casey NOWCorps at Cleveland Metroparks</p>	<p>Performing for the Protocol at the Expense of Overall Functionality (30 minutes)</p> <p>Derek M. Berg and Chris Allen Contech Engineered Solutions</p> <hr/> <p>AI in the Stormwater Industry: Practical Applications Available Today (30 minutes)</p> <p>Ty Garmon Digital Stormwater</p>	<p>Foundations of Water Law: Ohio and the Clean Water Act (60 minutes)</p> <p>Louis L. McMahon, McMahon DeGulis</p>

10:00 - 10:30 am **Break**  
**Visit Exhibit Hall and see all our Exhibitors!!**

10:30 - 12:00 pm 1.5 CEU	<p>Identification and Evaluation of Alternative Wetland Assessment Methods (30 minutes)</p> <p>Matt Lamoreaux Ohio EPA Mat Aldridge, Burgess &amp; Niple</p> <hr/> <p>Restoration Basics: Get the Soil Right, Plants will Follow (60 minutes)</p> <p>Jim Kooser and Eric Goddard Atlas Technical Consultants</p>	<p>Nature-Based Innovative Stormwater Management Solution Using Existing Street Median (30 minutes)</p> <p>Dr. Thewodros K Geberemariam NYC DEP</p> <hr/> <p>From Overflow to Opportunity: Innovative Approaches to Stormwater Reuse (60 minutes)</p> <p>Brian Ternes, PE Burgess and Niple</p>	<p>New Administration, New Directions? (30 minutes)</p> <p>Louis L. McMahon McMahon DeGulis LLP</p> <hr/> <p>Engineering Failures and Their Consequences (Ethics) (60 minutes)</p> <p>Tom Pannett Kegler Brown Hill + Ritter</p>
-----------------------------	--	---	--

12:00 -12:45 pm **Lunch**

12:45 - 1:15 pm **Exhibit Hall**

1:15 - 2:45 pm 1.5 CEU	<p>2025 ASCE Ohio Infrastructure Report Card Stormwater Chapter Update (30 minutes)</p> <p>George Remias and Derek Vogel. NEORS</p> <hr/> <p>Balancing Dam Safety, Stormwater, and Community Goals within Urban Watersheds (30 minutes)</p> <p>Denis Zaharija, NEORS Steven Riedy and Tom Batrone, HDR</p> <hr/> <p>Flora vs Fawn-a: Losing Green to Save A Buck (30 minutes)</p> <p>Jessica Glowczewski City of Akron</p>	<p>Rainwater and Land Development Updates (30 minutes)</p> <p>Justin Reinhart Ohio EPA</p> <hr/> <p>Stormwater Managed Release Concept: Sustainable Solutions for Urban Resilience (60 minutes)</p> <p>Deryk Shaw Rettew Associates</p>	<p>Forever Chemicals, Forever Questions (PFAS) (30 minutes)</p> <p>Louis L. McMahon and Megan E. Goedeker McMahon DeGulis LLP</p> <hr/> <p>Legal Hot Topics and Headlines in Stormwater Management (60 minutes)</p> <p>Megan E. Goedeker McMahon DeGulis LLP</p>
---------------------------	--	---	--



Stream and River Restoration and Science Aloeswood	Modeling and Research Rosewood	Climate Change, Resiliency, and Sustainability Zebrawood
<p>Natural Biodegradable Erosion Control Products for Channel and Streambank Stabilization (30 minutes)</p> <p>Andy Durham, P.E., Western Green</p> <hr/> <p>Stream Restoration in an Urban Environment - Harroun Park (30 minutes)</p> <p>Bradley Petru, CEC</p>	<p>City of Warren: Prioritizing the Stormwater Flooding Relief (60 minutes)</p> <p>Michael Keating and Rick Barone, Hazen and Sawyer Jenna Johnston, ECO</p>	<p>Climate Resiliency in Ecological Restoration, Collective Action, and Community Education (60 minutes)</p> <p>Peter Bode, Nature Center at Shaker Lakes</p>
<p>A Nature-Based Approach for Resilient Infrastructure: SEPTA Jenkintown Stream Restoration (30 minutes)</p> <p>Tyler Charles, JMT</p> <hr/> <p>Habitat and biological communities improve post-restoration in two Ohio streams (30 minutes)</p> <p>Julie Bingham and Jennifer Clark EnviroScience</p> <hr/> <p>Navigating the Many Surprises of a Stream and Wetland Restoration (30 minutes)</p> <p>Kevin Saracino, Chagrin River Watershed Partners Christina Znidarsic, Davey Resource Group</p>	<p>Combining Ponds &amp; Filtration to Achieve Enhanced Water Quality (30 minutes)</p> <p>Lynn Ramsey Rymar Waterworks</p> <hr/> <p>Regulations and the Characterization of PFAS in Complex Environmental Matrices (30 minutes)</p> <p>Jonathan Thorn Eurofins Environment Testing (USA)</p> <hr/> <p>Haunted by Ghost Streams: Intuitively Visualizing Urban Flooding (30 minutes)</p> <p>Alex Litofsky, OHM Advisors</p>	<p>Managing Forests for Resilience: Looking at Birds (30 minutes)</p> <p>Rosana Villafan, NOWCorps at Holden Forests and Gardens</p> <hr/> <p>Holistic Stormwater Management to Improve Sustainability and Resilience (30 minutes)</p> <p>Dan Figola, ADS Benjamin Sojka, RMS</p> <hr/> <p>Updating Ohio Design Storm Rainfall Distributions (30 minutes)</p> <p>Jay Dorsey, OH2O, LLC Justin Reinhart, Ohio EPA</p>
<p>Can't Touch This: Restoration of Aquatic Habitat in Petitioned Ditches (30 minutes)</p> <p>Rachel Spadafore Biohabitats</p> <hr/> <p>Conservation Ditches in Lucas County Designed to Reduce Nutrient Contributions (60 minutes)</p> <p>Mike Pniewski, Jay Mosley, and Matt McFadden Lucas County Engineer's Office</p>	<p>Mitigating Pollutants and Erosion through Retrofits to Aging Stormwater Basins (30 minutes)</p> <p>Andrew Tirpak, Ohio State University Keely Davidson-Bennett, Chagrin River Watershed Partners</p> <hr/> <p>A New Look at Aurora Shores Flooding: 2D HEC-RAS Modeling (60 minutes)</p> <p>Cole Blasko, Tetra Tech David L. Koontz, PE, SI, Summit County Engineer Stephanie Deibel, Summit County Engineer</p>	<p>East vs. West: Stormwater Solutions Showdown with a Wicked Twist (30 minutes)</p> <p>Kendall Grimm and Rachel Sebian R2O Consulting LLC</p> <hr/> <p>Forecasting the Future for Central Ohio's Watersheds (30 minutes)</p> <p>Eric Onderak, PE, Coldwater Consulting Kathleen Smith, PE, PMP, ENV SP, Hazen and Sawyer</p> <hr/> <p>Stormwater Parks: How to Create Economic and Social Resilience (30 minutes)</p> <p>Julie Stein and Tom Batrone, HDR</p>



# Ohio Stormwater Conference Technical Agenda

	Watershed Planning and Restoration Orange Room	Stormwater Practices, BMPs, Planning & Design Nile Room	Legal Zambezi Room
--	---	--	-----------------------

**2:45 - 3:15 pm Break**  
**Visit Exhibit Hall and see all our Exhibitors!!**

3:15 - 4:15 pm  1.0 CEU	<p>Sandusky Bay Landscape Scale Restoration Initiative for Water Quality Improvements (60 minutes)</p> <p>Ashlee Decker, The Nature Conservancy Tom Denbow, Biohabitats Eric Saas, ODNR</p>	<p>Flood Reduction, Channel Reconstruction, Flow Resumption, and Obstruction Subduction! (60 minutes)</p> <p>Derek Vogel, NEORSD Dempsey Ballou, Jacobs</p>	<p>Mitigating Flood Risks (60 minutes)</p> <p>Lee A. Slone and John M. Hoopingarner McMahon DeGulis</p>
-------------------------------	---	---	---

**4:15 - 4:30 pm Break**

4:30 - 5:30 pm  1.0 CEU	<p>Upper Blacklick Creek Watershed: Innovative Flood Mitigation Solutions (30 minutes)</p> <p>Chad Boyer ms consultants</p> <hr/> <p>The Past, Present, Future of Managing Private Lands in Ohio (30 minutes)</p> <p>Christina Kuchle Division of Wildlife, ODNR</p>	<p>Sustaining Ohio's First 'Clean Water Contractor Program' (60 minutes)</p> <p>Emily Kuzmick, ODNR Old Woman Creek Valerie Sasak, Erie Conservation District</p>	<p>NUTRIENTS: Important Issues Coming to a Great Lake Near You (30 minutes)</p> <p>Louis L. McMahon McMahon DeGulis</p> <hr/> <p>Legal Roundtable (30 minutes)</p> <p>Louis L. McMahon McMahon DeGulis</p>
-------------------------------	--	---	--

**5:30 - 7:30 pm 80's THEME RECEPTION - EXHIBIT HALL**



# Thursday May 8, 2025

Stream and River Restoration and Science  
Aloeswood

Modeling and Research  
Rosewood

Climate Change, Resiliency, and Sustainability  
Zebrawood

Digital Stormwater Asset Management: A 360°  
Stormwater System Streamview (30 minutes)

Sarah Fuller, Wade Trim  
Ryan Abrahamsen, Terrain 360

What's to be Gained? Quantifying Stream  
Function at Cleveland Metroparks (30 minutes)

Elizabeth Hiser, Cleveland Metroparks

2D Storm Water Modeling: Case Studies and Lessons  
Learned (60 minutes)

Khaled Abdo, Mary Whitehead and Hazem Gheith  
Arcadis

Addressing Climate Change with Higher Standards  
for Better Watershed Management (60 minutes)

Kari Mackenbach, ms consultants  
Anil Tangirala, ms consultants

Delaware Piedmont Stream Restoration - 17 Years  
Post Construction (30 minutes)

Mike Thompson, Meadville Land Service

Dam! That looks good. (30 minutes)

Ivan Valentic and Jesse Rufener, GPD Group  
Nick Agins, Lake County Stormwater Management

Asset-Level Climate Resiliency Assessment in the Big Creek  
Watershed (30 minutes)

Rezvane Ghorbani, Virginia Tech  
George Remias, PE, NEORS

Adopting lessons learned from Ohio to Hurricanes and 200-  
year storms (30 minutes)

Brandon P. Wong  
Hyfi

Town of Ashland, Virginia Flood Resiliency Plan  
(60 minutes)

Alice Ortman and Collin Marshall  
Johnson, Mirmiran & Thompson





**THE OHIO STORMWATER CONFERENCE**

*presents*

# **BACK** *to* *the* **80's** *Reception*

**THURSDAY MAY 8, 5:30PM**  
**MAIN EXHIBIT HALL**

**KARRAKE - DANCE FLOOR -**  
**PHOTOBOOTH -**  
**LIGHT HORS D'OEUVRES -**  
**SPECIALTY DRINKS**

**ENTERTAINMENT PROVIDED BY:**  
**ROCK AND ROLL EXPRESS**

# *2026 Ohio Stormwater Conference*

## **SAVE THE DATE . . . May 2026**

The 2026 Ohio Stormwater Conference  
Kalahari Resort and Conference Center  
Sandusky, Ohio



Interested in Presenting? Call for Abstracts will open in September 2025.

Want to have a booth? Want to be on the planning committee?

Contact Harry Stark at [harry@tinkerscreek.org](mailto:harry@tinkerscreek.org)



Water Resources Expertise

# We Own It.®

## Water Resources Services

- Stormwater Master Planning and BMP Design
- Watershed Planning and Stream Assessments
- Stream and Wetland Restoration
- Pollutant Modeling
- TMDL Monitoring
- Green Infrastructure Design and Monitoring
- Multi-Sector Industrial Stormwater Permitting and Compliance

**PROUD TO EXHIBIT AT THE**  
2025 Ohio Stormwater  
Conference

## Ohio offices:

**CEC Cincinnati**  
513.985.0226

**CEC Cleveland**  
440.544.1555

**CEC Columbus**  
614.540.6633

**CEC Toledo**  
419.724.5281

[www.cecinc.com](http://www.cecinc.com)



Civil & Environmental Consultants, Inc.



CTL is a full service consulting engineering firm, which provides environmental, geotechnical, construction administration & inspection, and specialized testing services to the construction industry.

CTL Engineering can provide the following services:

- Civil/Site Design, Planning, and Land Surveying Services
- Storm Water Compliance and Design Services
- Ecological Surveys and Permitting
- Threatened and Endangered Species Surveys and Permitting
- Wetland and Stream Surveys and Permitting
- NEPA
- GIS Mapping and Survey
- Geotechnical Engineering
- Construction Material Testing
- Water and Sediment Sampling and Testing
- Environmental Site Assessments

CTL is an employee-owned, MBE company.

For more information about our services and office locations, please visit [www.ctleng.com](http://www.ctleng.com).







**K.E. McCARTNEY & ASSOCIATES**  
ENGINEERS • PLANNERS • SURVEYORS

**Services Include:**

- Stormwater Management
- Master Planning
- Green Infrastructure
- Condition Assessment (CCTV & Vac Services)
- Ohio EPA MS4 Compliance
- Stormwater Utility Implementation
- Geospatial Services



*Kingwood Center Gardens Artful Stormwater Design  
Mansfield, OH*

**Providing Stormwater Solutions Since 1978**

[www.kemccartney.com](http://www.kemccartney.com)

**DRIVING  
SUCCESS  
POWERING  
SOLUTIONS**



**SOLUTIONS  
AT YOUR  
FINGERTIPS**





**SALES & RENTAL**



**SERVICE**



**PARTS**



**JDC**

800.336.4369  
TEAMJDC.COM



▲ Park entrance



▲ Playground area


**Parks, recreation, and green infrastructure at Linview Park  
North Linden, Columbus, OH**

▼ Bioretention basin and educational signage




**CDM Smith is proud  
to sponsor the 2025  
Ohio Stormwater Conference**

Visit us at our booth in the exhibition hall



▲ Gateway Park with Surface Bioretention and Underground Storage

**NEORS D Union Buckeye Green Stormwater Infrastructure Improvements Project, Cleveland, OH**



Cincinnati | Cleveland | Columbus | Wadsworth



# Ohio Stormwater Conference Technical Agenda

	Watershed Planning and Restoration Orange Room	Stormwater Practices, BMPs, Planning & Design Nile Room	Green Infrastructure Zambezi Room
<p>8:00 - 9:30 am</p> <p>1.5 CEU</p>	<p>How environmental justice can strengthen an evolving stormwater program (60 minutes)</p> <p>Lilah Zautner and Leila Jackson NEORS</p> <hr/> <p>Accessibility to Environmental Education (30 minutes)</p> <p>Nichole Lally NOWCorps at University of Akron Field Station</p>	<p>Stormwater Real-Time Controls at CVG Airport to Protect Gunpowder Creek (60 minutes)</p> <p>Cole Musial, Cincinnati/Northern Kentucky International Airport (CVG) Chris Kaeff, Williams Creek Management Dayton Marchese, OptiRTC</p> <hr/> <p>Oakridge - Where A CMP Should Not Have Been! (30 minutes)</p> <p>Mark Delisio, Verdantas</p>	<p>Creative Stormwatering (30 minutes)</p> <p>Sarah Brunot and Kelly Parker Cuyahoga SWCD</p> <hr/> <p>Retrofitting GI: Lessons from Two Failed Biofilters (60 minutes)</p> <p>Michael Wegner Brown and Caldwell</p>
<p>9:30 am - 10:00 am      Break - Visit Exhibitors/Sponsors</p>			
<p>10:00 - 11:00 am</p> <p>1.0 CEU</p>	<p>NOACA Riparian &amp; Wetland Setback Legislation Review Update 2024 (30 minutes)</p> <p>Pamela Davis NOACA</p> <hr/> <p>Leveraging Mass Media to meet Stormwater Public Education Goals (30 minutes)</p> <p>Tiara Davis TMACOG</p>	<p>A Closer Look at the Water Quality Volume (30 minutes)</p> <p>Justin Reinhart, Ohio EPA</p> <hr/> <p>Gravity Separation for Stormwater Sediment – Then and Now (30 minutes)</p> <p>Dana Stayer StormTrap</p>	<p>Restoring Hydrologic Function Lost During Development (60 minutes)</p> <p>Jay Dorsey, OH2O, LLC</p>
<p>11:10 - 12:10 pm</p> <p>1.0 CEU</p>	<p>Protecting Watersheds through Erosion Control Methods (60 minutes)</p> <p>Michael Everhart, CPESC, QSM EJ Prescott</p>	<p>Ohio EPA Updates and Roundtable (60 minutes)</p> <p>Jason Fyfe Ohio EPA</p>	<p>Efficacy of GI in Stormwater. (30 minutes)</p> <p>Suresh Sharma Youngstown State University</p> <hr/> <p>How Effective are Distributed Nature Based Solutions for Flood Control? (30 minutes)</p> <p>Caroline Burger Carollo Engineers</p>



# Friday May 9, 2025

Stream and River Restoration and Science Aloeswood	Monitoring, Inspection, and Maintenance Rosewood Room	Transportation Zebrawood Room
<p>Retrofitting Urban Projects while Preserving Historic Integrity (30 minutes)</p> <p>Joe Lanni and Jesse Rufener GPD Group</p> <hr/> <p>From Overflow to Oasis: Harnessing Floodplain Wetlands for Resilient Watersheds (60 minutes)</p> <p>Megan Bowman, EI, Burgess &amp; Niple Crystal Scales, WPIT, Burgess &amp; Niple Brian Tornes, PE, Burgess &amp; Niple</p>	<p>Forgotten BMPs: Good housekeeping measures and Non-structural controls for Construction (30 minutes)</p> <p>Brad Flack StormwaterONE</p> <hr/> <p>Drones &amp; Drainage (30 minutes)</p> <p>Kevin J Wienhold EnviroScience</p> <hr/> <p>Evaluating Pilot Projects to Reduce I&amp;I in Seattle's Combined Sewers (30 minutes)</p> <p>Katherine Zodrow, ECO</p>	<p>Transportation Roundtable (30 minutes)</p> <p>Jon Prier, ODOT Mark McCabe, JEO Consulting Group</p> <hr/> <p>Am I Spec'ing Optimal Backfill/Bedding/Roadway Base Materials? (30 minutes)</p> <p>Leroy Wertz, PE Wertz Geotechnical Engineering</p> <hr/> <p>Drainage: How do you determine what you need? (30 minutes)</p> <p>Michael Schroer and Kristie Pohlman Trench Drain Systems</p>
<p>Ottawa Hills Floodplain Wetland Restoration. Let's Get it Growing! (60 minutes)</p> <p>Patrick Nortz, Otisco Engineering Cynthia Paschke, Land Solutions Ashlee Decker, The Nature Conservancy</p>	<p>Balancing stakeholders successfully to implement Municipal MS4 &amp; SWP3 Programs (60 minutes)</p> <p>Kristin Hall and Fred Anger Cuyahoga SWCD</p>	<p>Lessons Learned on ODOT Construction Projects in Stormwater Management (30 minutes)</p> <p>Stacey Nuveman ODOT</p> <hr/> <p>When a "Diet" Leads to Heartburn - Transforming Central (30 minutes)</p> <p>John Lyons Strand Associates</p>
<p>Lessons Learned from a Decade of Designing for Floodplain Connectivity (30 minutes)</p> <p>Suzanne Hoehne Biohabitats</p> <hr/> <p>Maximizing Project Objectives: A Case Study in Project Evolution (30 minutes)</p> <p>Edith Kippenhan, City of Toledo Deanna Bobak, Civil and Environmental Consultants</p>	<p>Navigating Environmental Permitting and Compliance for Construction Compliance (30 minutes)</p> <p>Eric Lance CTL Engineering</p> <hr/> <p>Strategies for Successful Deviation Reduction at Construction Sites (30 minutes)</p> <p>Mack Overton, KERAMIDA Charlie Warino, NiSource</p>	<p>Rethinking SWPPP Success: Using Sustainable BMPs to Achieve Results (60 minutes)</p> <p>Joe Moore Erosion &amp; Construction Solutions</p>



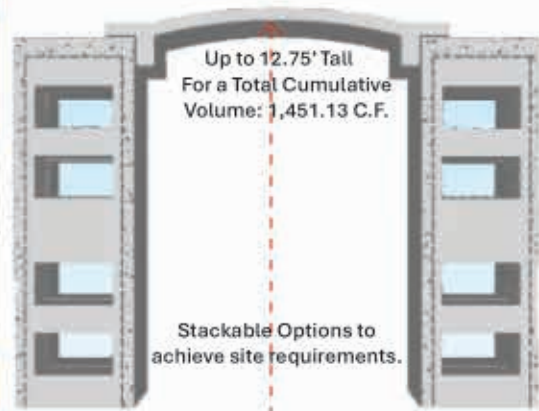


# MACK INDUSTRIES

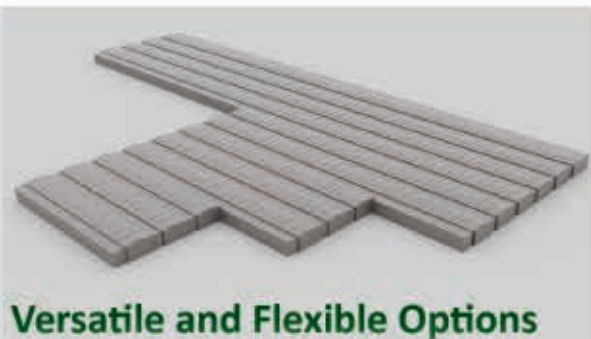
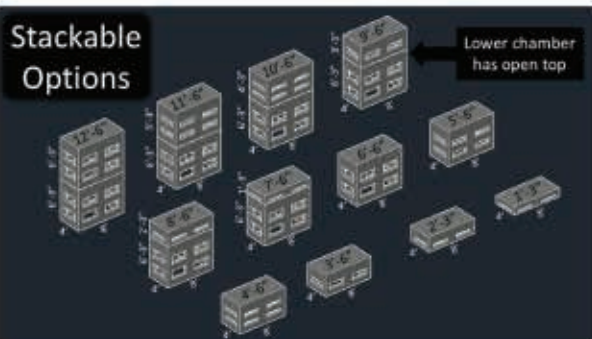
*Quality Precast Concrete  
Products Since 1932*

[WWW.MACKCONCRETE.COM](http://WWW.MACKCONCRETE.COM)

## Smarter Stormwater Solutions with Mack Industries



- ✓ **Cost-Effective Installation –**
  - 45-55% smaller footprint compared to other solutions - less labor.
  - Significantly less stone required.
  - Lightweight system allows easy installation with standard excavation equipment. No Crane Needed.
  - Unmatched installation speed with lower labor requirements.
- ✓ **Customizable Designs –** Engineered to fit any site layout.
- ✓ **Storage Capacity–** The highest capacity modular precast detention system in the industry.
- ✓ **Durable & Strong –** Precast concrete design supports H20 wheel loads with minimal soil cover.
- ✓ **Maximum Site Utilization –** high storage capacity per surface square foot frees up valuable space for buildable land.



*Together We Build Tomorrow's Infrastructure.*

**419-392-4628 - JOHN HERL**



# Realize More<sup>®</sup>

Hazen helps clients develop comprehensive stormwater strategies that right-size infrastructure and maximize community protection and investments.

Check Out Hazen Presentations Thursday, May 8th:  
Forecasting the Future for Central Ohio's Watersheds;  
City of Warren: Prioritizing the Stormwater Flooding Relief

## Hazen

[hazenandsawyer.com](http://hazenandsawyer.com)



## HZW Environmental Consultants

- ◆ Phase I & II Environmental Site Assessments
- ◆ Extensive VAP Experience
- ◆ Environmental Compliance Audits
- ◆ Wetlands Delineation, Permitting & Mitigation
- ◆ Safety and Industrial Hygiene, Asbestos Management
- ◆ Geoprobe Sub-Surface Sampling

HZW has three Certified Professionals under Ohio's Voluntary Action Program

6105 Heisley Road • Mentor, Ohio 44060  
Phone: (800) 808-8484 • Fax: (440) 357-1510  
email: [hzwenv@hzwenv.com](mailto:hzwenv@hzwenv.com)  
Akron • Cleveland

***HZW is recognized as a Disadvantaged Business Enterprise (DBE) by the State of Ohio***



Highest infiltration rate and lowest maintenance of any permeable surface



Machine Install



Hand Placed Install



Multiple Colors



HEATED HELIPAD

No Rock Between Blocks

***What Does Your Pavement Do For You?***



5" of snow

8:00 AM



HEATED

3:00 PM



DRY

6:00 PM


[info@pavedrain.com](mailto:info@pavedrain.com)

[www.pavedrain.com](http://www.pavedrain.com)





Next Generation Detention Pond Skimmer



info@rymarwaterworks.com | 855.697.9333



Expect a straightforward approach

**We make it easy.**

We have a strong team of civil and environmental engineers to meet the challenge of creating a sustainable water resources environment.

Follow us on 



jmt.com

Providing your community with compliant, resilient, and nature-based **stormwater management solutions.**



JEO CONSULTING GROUP



jeo.com

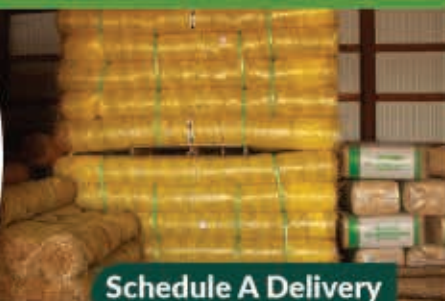
Engineering | Architecture | Surveying | Planning





# RENEWED OUTDOORS

# Erosion Control & Landscape Supplies



## Make your job easier with premium products & hassle-free delivery!

- Filter Sock
- Geotextiles
- Hydromulch
- Straw Products
- Mulch
- Fertilizers
- Herbicides
- Grass Seed
- Bulk Stone
- Product Delivery
- Soil Amendments
- Blower Truck Installations

Contact a sales rep for a catalog or for any special order requests!

Schedule A Delivery



Username: Wholesale1

Password: BDPguest

sales@renewedoutdoors.com  
(419) 874-5537 ext. 9

11330 Avenue Rd,  
Perrysburg, OH 43551

23691 N Dixie Hwy.,  
Perrysburg, OH 43551

1510 Kieswetter Rd,  
Holland, OH 43528



## WE ARE PROUD ENGINEERS OF THESE PROGRESSIVE PROJECTS!

UNDER CONSTRUCTION



### BEDROCK - CUYAHOGA RIVERFRONT DEVELOPMENT

SHORELINE IMPROVEMENTS | SW MANAGEMENT | UTILITIES |  
ROADWAY | BRIDGE | SITE | STRUCTURAL



### IRISHTOWN BEND STABILIZATION & REDEVELOPMENT

SHORELINE IMPROVEMENTS | SW MANAGEMENT | H&H | SLOPE  
STABILITY | UTILITIES | ROADWAY | SITE | STRUCTURAL

CONSTRUCTED



### NEORS BROOKSIDE CULVERT

SW MANAGEMENT | CULVERT REHAB | CIVIL | STRUCTURAL



### NEORS DEBRIS RACKS & ACCESS ROAD IMPROVEMENTS

STREAM AND CULVERT IMPROVEMENTS | STRUCTURAL |  
CIVIL | H&H



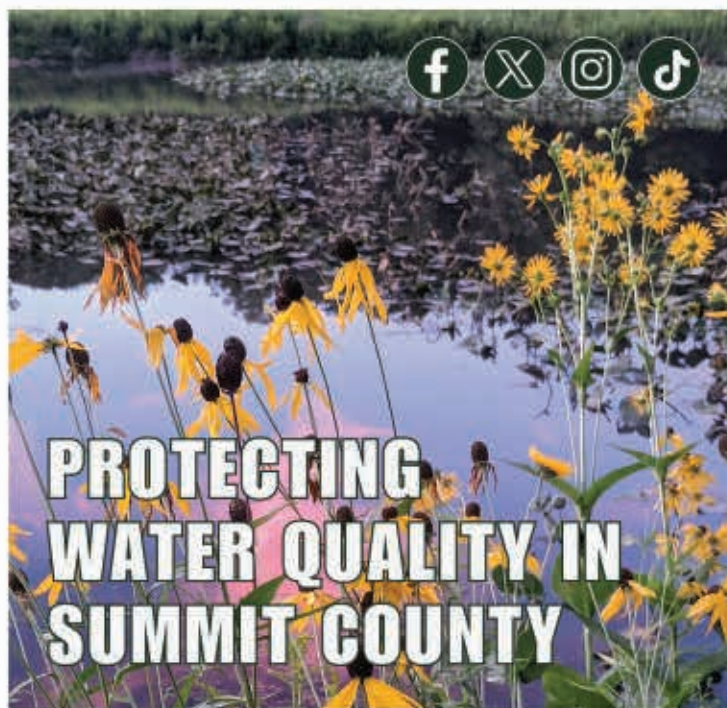
# PERMEABLE WITHOUT COMPROMISE

Designing to be environmentally friendly doesn't mean you have to compromise your vision.

With a variety of sizes, colors and finishes available in our permeable paver collection, you can create sustainable stormwater management solutions that seamlessly coordinate with your designs.

Contact us for samples, product information and CEU seminars today.

COMMERCIAL.UNILOCK.COM | 1-800-UNILOCK



**SUMMIT**  
SOIL & WATER  
CONSERVATION DISTRICT

1180 S. Main Street, Suite 230, Akron, OH 44301-1254  
SummitSWCD.com



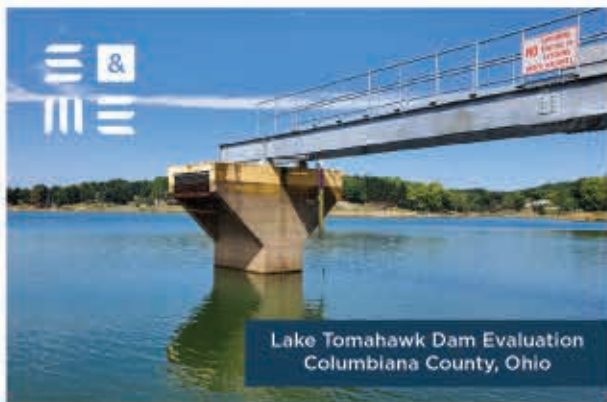
## Develop Funding Improve Performance Enhance Services

We have decades of experience in stormwater funding feasibility analysis and program planning, review and implementation. Our team will provide insights, expertise and trusted advice to help your stormwater programs and communities thrive. We can help you:

- + Solve stormwater program & funding challenges
- + Create & maintain accurate stormwater billing data
- + Provide tools for customer service & system integration
- + Deliver user-friendly financial rate models to meet needs
- + Develop funding streams and update program & financial approaches to today's standards

[www.raftelis.com](http://www.raftelis.com) / [info@raftelis.com](mailto:info@raftelis.com)







# S&ME


Helping You Prosper

[www.smeinc.com](http://www.smeinc.com)



Civil // Geotechnical // Environmental // Construction Engineering

# Every Drop Matters



Proud annual sponsor of the Ohio Stormwater Conference

- Planning
- Land Surveying
- Civil | Structural Engineering
- Environmental Sciences - Green
- Infrastructure - Ecological Restoration
- Construction Management | Administration
- Construction Inspection | Materials Testing
- Landscape Architecture - Cultural Resources
- Mechanical | Electrical | Process Engineering
- Instrumentation | Controls | Automation
- Geotechnical Engineering - Hydrography
- Agricultural Engineering
- Transportation Design

Toledo | Cincinnati | Columbus | Cleveland | Mansfield | Minster | North Canton | Urbana

[www.MannikSmithGroup.com](http://www.MannikSmithGroup.com)








## StormTrap®

MODULAR CONCRETE  
STORMWATER MANAGEMENT



# INNOVATIVE STORMWATER MANAGEMENT SOLUTIONS

TREATMENT   DETENTION   INFILTRATION   HARVESTING

STOP BY OUR BOOTH!

+1-877-867-6872





**Smarter  
projects  
flow from  
great ideas**

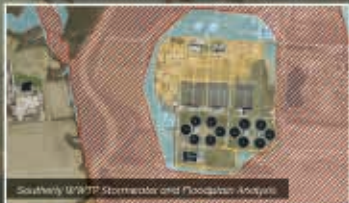


**ms consultants, inc.**  
engineers. architects. planners

**Customizing the right solution for  
YOUR local watershed**

Advanced H&H  
Modeling  
Flood Mitigation  
Stormwater  
Management & Design

Green Infrastructure  
Design  
DOT Stormwater  
Research



Southern WWP Stormwater and Floodplain Analysis



South Fork Licking River Flood Mitigation Analysis and Implementation



Western Woodport Township Stormwater Characterization Study



ODOT Benefit Analysis of Barrier EWT Screens

[msconsultants.com](http://msconsultants.com) | in

**PROVIDING A FULL CONTINUUM OF INNOVATIVE SERVICES  
TO STRENGTHEN OUR NATION'S INFRASTRUCTURE**

*Towpath Trail / Cleveland, Ohio*



*Proud to be a Sponsor at the Ohio Stormwater Conference*

**Michael Baker**  
INTERNATIONAL

[MBAKERINTL.COM](http://MBAKERINTL.COM)





**Meadville  
Land  
Service, Inc.**

*A Mobile Restoration Company*

**[www.MeadvilleLandService.com](http://www.MeadvilleLandService.com)**



## THE COMMUNITY ADVANCEMENT FIRM

ARCHITECTS. ENGINEERS. PLANNERS.



LEARN MORE

At OHM Advisors, multidisciplinary teamwork focused on people-first solutions yields ideas that aren't just different. *They're better.*

Share your vision with us, and together we'll create great places for people.

**OHM-Advisors.com | 888.522.6711**



YOUR PARTNER FOR **STORMWATER SOLUTIONS**

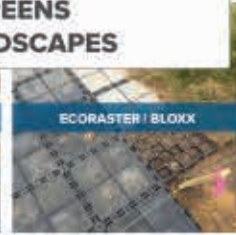
SUBSURFACE STORAGE  
PERMEABLE SURFACES  
FILTERS/SCREENS  
URBAN LANDSCAPES



R-TANK



STORMCRETE



ECRASTER / BLOXX



POWERSLOCK



RAIN GUARDIAN

CONTACT YOUR LOCAL OHIO EXPERT  
**TOM PUMA (614) 270-7571**

**DELAWARE**  
5427 State Rte 37 E  
(740) 957-6417

**COLUMBUS**  
3845 Groveport Rd.  
(614) 497-2323

**DAYTON**  
2735 Kearns Ave  
(937) 277-3229

**HOLLAND**  
1501 Kieswetter Rd  
(567) 297-6125

**MASURY**  
7800 Addison Rd  
(330) 448-0000

**MARIETTA**  
173 Enterprise Dr  
(740) 373-3456

**VALLEY VIEW**  
7500 Hub Pkwy  
(216) 398-9601

**EAST LIVERPOOL**  
16363 Saint Clair Ave  
(330) 386-3646

**CINCINNATI**  
11860 Mosteller Rd  
(513) 942-2525



Keep your covers where  
they belong.



Find out how the STORMSURGE® access  
assembly protects you from missing manhole  
covers after a major rain event.

Learn more at [ejco.com/stormsurge](http://ejco.com/stormsurge) or call 800 626 4653  
Made in the USA



Emergency  
Response and  
Restoration



Toxicity Testing



Vibracore  
Sediment  
Sampling



Stormwater and Phase I / II  
Environmental Inspection



Endangered  
Species Surveys



Wetland & Stream  
Services and  
Permitting



Harmful Algal  
Bloom Testing



Commercial &  
Scientific Diving



Ecological  
Restoration

**NATIONWIDE SOLUTIONS TO ANY ENVIRONMENTAL CHALLENGE**  
800.940.4025 | [EnviroScienceInc.com](http://EnviroScienceInc.com) | 888.866.8540 (24/7 Emergencies)





Protect your environment with our  
high-quality solutions!

Team EJP has provided quality products, services, and solutions for over 70 years. Are you looking for reliable products to manage erosion, sediment control, geosynthetics, and stormwater? Contact Team EJP today! From straw wattles and hydromulch to geotextiles and innovative stormwater filtration products, Team EJP has what you need.



WATER • WASTEWATER • STORMWATER  
**SOLUTIONS**

**1-800-EJP-24HR**  
**EJPrescott.com**

Lima, OH 419-225-6292  
Huber Heights, OH 937-847-2665

**DIAMOND**  
WATERFRONTS

SEA WALLS • DOCKS • DECKS • MARINE CONSTRUCTION

330.882.5296

• DOCKS • GANGWAYS & RAMPS  
• BOAT LIFTS • STAIRWAYS  
• SEA WALLS • BARGE SERVICE

RESIDENTIAL • COMMERCIAL • PARKS  
**DIAMONDWATERFRONTS.COM**

Faircloth  
Skimmer

Made in USA

THE MOST TRUSTED  
SKIMMER ON THE MARKET  
SURFACE DRAIN FOR SEDIMENT  
BASINS, TRAPS AND VAULTS

- High-quality product that installs quickly and is easy to maintain
- Competitively priced and available for same day / next day shipping
- Meets EPA's surface outlet requirement
- Dewatering calculations verified through third-party testing

**EARN 1 PDH**

Schedule a Lunch & Learn on "How to Build a Better Sediment Basin/Basin"

Use our online calculator to spec the right skimmer

Follow us on LinkedIn

@faircloth-skimmer | 919.732.1244 | [www.FairclothSkimmer.com](http://www.FairclothSkimmer.com)





Your source  
for solving your  
**stormwater  
challenges**

Akron // Cleveland // Columbus // Logan // Toledo  
800.336.5352 // dlz.com

# BEC

(800) 747-2312  
BrownEquipment.net

  
Comprehensive  
Equipment  
Solutions

  
Collaboration  
with Leading  
Manufacturers

  
Expert  
Maintenance  
& Repair

  
Commitment  
to Quality

NEW • USED • RENTALS • PARTS • SERVICE







INDIANA • KENTUCKY • OHIO  
**CONCRETE PIPE**  
ASSOCIATION



Brian Harman  
bharman@ncp-inc.com  
(419) 283-9300



**Rinker**  
MATERIALS®  
A QUIKRETE® COMPANY

Ed Waterfall  
Edward.waterfall@rinkerpipe.com  
(330) 760-2712

BIOHABITATS.COM  
**Go Nuts & Win!**

Guess how many buckeyes we have squirreled away at **Booth 329** and you just might win a special prize.



**BURGESS & NIPLE**  
Engineers ■ Environmental Scientists

**PROTECT INVESTMENTS.**  
**PRESERVE NATURAL RESOURCES.**

**SERVICES INCLUDE:** Environmental Restoration,  
Ecological Protection, Permitting & Funding

Darby Dan Farms  
Wetland Restoration  
Galloway, OH



**BRIAN TORNES, PE**  
330 Rush Alley | Suite 700 | Columbus, OH 43215  
614-459-2050 x1410

Learn more at [burgessniple.com](http://burgessniple.com)





# Innovative Stormwater Solutions

Advanced Drainage Systems manages stormwater from when the rain first hits the ground until the moment it's returned to lakes and streams.



## Arcadia Hydrodynamic Separator

Arcadia is a hydrodynamic separator designed to remove total suspended solids. Arcadia offers multiple pipe configurations and quick installation.



## Aquabox Stormwater System

Aquabox's modular system is designed for sustainable water management. Aquabox adapts to small sites, heavy loads and challenging layouts - delivering efficient, high-performance solutions.



Designed to meet new  
NJCAT Standards



Fast and easy installation



Variable inlet/outlet angle  
configurations



High load resistance



Prevents resuspension of  
captured contaminants



Stormwater retention/  
detention

Learn about ADS products by visiting us in  
Booth 305 or at [adspipe.com](https://adspipe.com).

**ADS**  
Advanced Drainage Systems, Inc.